

## Product datasheet for **AP02029SU-N**

### Glypican 4 (GPC4) (509-520) Rabbit Polyclonal Antibody

#### Product data:

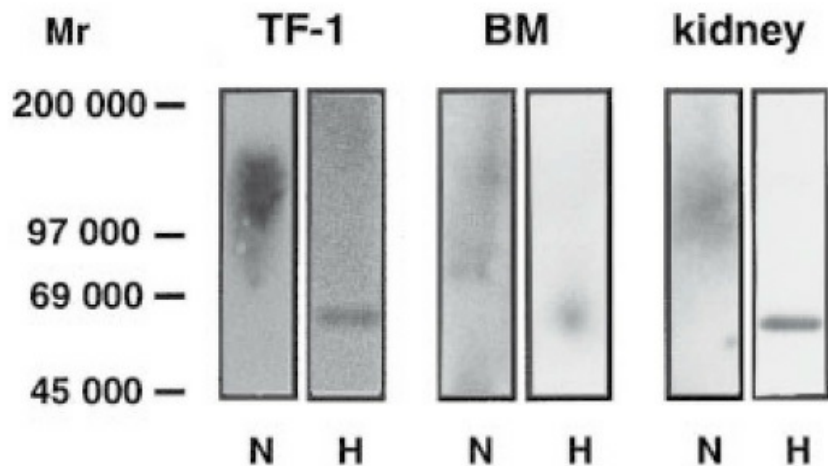
Product Type:	Primary Antibodies
Applications:	FC, IHC, WB
Recommended Dilution:	<b>Western blot:</b> 1/1000 (Ref.1). <b>Flow Cytometry</b> (Ref.1). <b>Immunohistochemistry on Paraffin Sections:</b> 1/1000 (Ref.1).
Reactivity:	Human, Mouse
Host:	Rabbit
Clonality:	Polyclonal
Immunogen:	Synthetic Glypican-4 (aa 509-520) coupled to KLH.
Specificity:	Specific for a core protein epitope (aa 509-520) of Glypican-4.
Formulation:	State: Serum State: Lyophilized Serum
Reconstitution Method:	Restore in 100µl aqua bidest to initial volume.
Conjugation:	Unconjugated
Storage:	Store lyophilized at 2-8°C for 6 months or at -20°C long term. After reconstitution store the antibody undiluted at 2-8°C for one month or (in aliquots) at -20°C long term. Avoid repeated freezing and thawing.
Stability:	Shelf life: one year from despatch.
Gene Name:	glypican 4
Database Link:	<a href="#">Entrez Gene 2239 Human O75487</a>
Background:	<b>Glypican-4</b> , previously known as K-Glypican, is a GPI-linked cell surface heparan sulfate proteoglycan of the glypican gene family, that comprises 6 members at present. Its function is only partially understood at present. However, glypican-4 seems to be involved in the control of cell growth and differentiation, especially in the development of the central nervous system and the kidney. Furthermore, Glypican-4 is expressed by hematopoietic stem cells and bone marrow stromal cells.



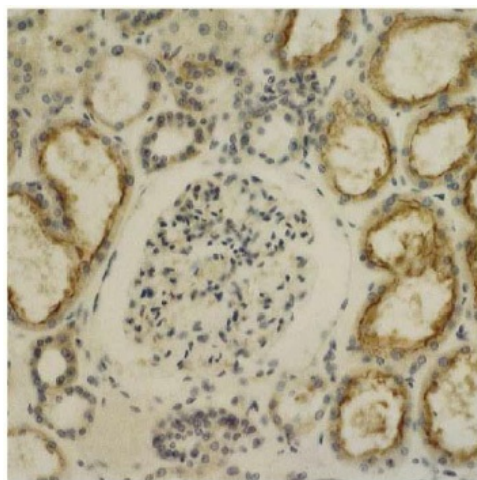
[View online »](#)

Synonyms: Glypican 4, K-glypican

**Product images:**



Western Blot analysis of Glypican-4 expression in tissues and cell lines. Proteoglycans from the cell or tissue extracts were separated by SDS-PAGE either prior to (N) or after (H) digestion with heparinase/heparitinase. Immunoblotting with Glypican-4 Antibody Cat.-No AP02029SU detects native Glypican-4 in the range of 90-200 kDa, the size of the core was Approx. 57 kDa. TF-1, Human haematopoietic-progenitor cell line; BM, bone marrow; Mr Molecular mass. Siebertz B et al. (1999) *Biochem. J.* 344: 937-43.



Immunohistochemistry of Glypican-4 staining in section of Human Kidney tissue. The section was incubated with Glypican-4 Antibody Cat.-No AP02029SU and detected using a peroxidase-conjugated secondary antibody according to standard procedures. In the cortex AP02029SU stains weakly the glomeruli, while the luminal surface of epithelial cells in the proximal tubules stained strongly. Original magnification: x1280. Siebertz B et al. (1999) *Biochem. J.* 344: 937-43.