

Product datasheet for **AP01890PU-M**

EGFR pSer1046 Rabbit Polyclonal Antibody

Product data:

Product Type:	Primary Antibodies
Applications:	IHC, WB
Recommended Dilution:	Western blot: 1/500-1/1000. Immunohistochemistry on Paraffin Sections: 1/50-1/200.
Reactivity:	Human, Mouse
Host:	Rabbit
Clonality:	Polyclonal
Specificity:	This antibody detects endogenous levels of EGFR protein only when phosphorylated at Serine 1046 (removal of the signal peptide).
Formulation:	PBS, pH~7.2 State: Aff - Purified State: Liquid purified Ig fraction Stabilizer: 50% Glycerol Preservative: 0.09% Sodium Azide
Concentration:	1.0 mg/ml
Purification:	Affinity Chromatography using epitope-specific immunogen
Conjugation:	Unconjugated
Storage:	Store undiluted at 2-8°C for one month or (in aliquots) at -20°C for longer. Avoid repeated freezing and thawing.
Stability:	Shelf life: one year from despatch.
Predicted Protein Size:	~ 175 kDa
Gene Name:	epidermal growth factor receptor
Database Link:	Entrez Gene 1956 Human P00533



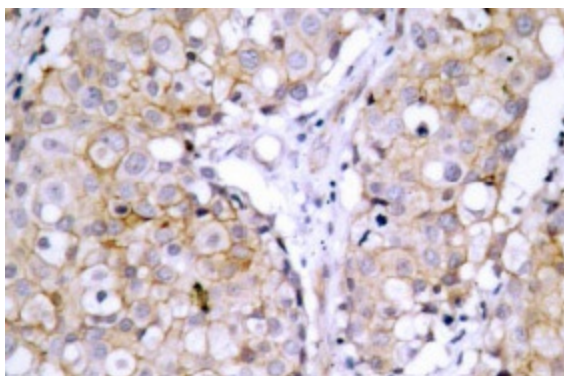
[View online »](#)

Background:

EGFR (Epidermal growth factor receptor, ErbB-1) is a receptor tyrosine kinase (RTK) that is one of four members of the EGFR/ErbB family of receptor tyrosine kinases. EGFR plays a key role in the regulation of essential normal cellular processes and in the pathophysiology of hyperproliferative diseases such as cancer. Activation of the EGFR signaling pathway has been linked with increased cell proliferation, angiogenesis, metastasis and decreased apoptosis. Phosphorylation of EGFR at specific serine and threonine residues attenuates EGFR kinase activity. EGFR carboxy-terminal residues Ser1046 and Ser1047 are phosphorylated by CaM kinase II; mutation of either of these serines results in upregulated EGFR tyrosine autophosphorylation.

Synonyms:

Epidermal growth factor receptor, EGF Receptor, erbB-1, c-ErbB-1

Product images:


Immunohistochemistry analysis of p-EGFR (pSer1046) antibody Cat.-No. [AP01890PU-N] in paraffin-embedded human breast carcinoma tissue.