

Product datasheet for **AP01870PU-M**

alpha Synuclein (SNCA) pSer129 Rabbit Polyclonal Antibody

Product data:

Product Type:	Primary Antibodies
Applications:	ELISA, IHC
Recommended Dilution:	Western blot: 1/500-1/1000. Immunohistochemistry on Paraffin Sections: 1/50-1/200.
Reactivity:	Human, Mouse, Rat
Host:	Rabbit
Clonality:	Polyclonal
Specificity:	This antibody detects endogenous levels of SNCA protein only when phosphorylated at Ser129.
Formulation:	Phosphate buffered saline (PBS), pH~7.2 State: Aff - Purified State: Liquid purified Ig fraction (> 95% pure by SDS-PAGE). Preservative: 0.05% Sodium Azide
Concentration:	1.0 mg/ml
Purification:	Affinity Chromatography using epitope-specific immunogen.
Conjugation:	Unconjugated
Storage:	Store undiluted at 2-8°C for one month or (in aliquots) at -20°C for longer. Avoid repeated freezing and thawing.
Stability:	Shelf life: One year from despatch.
Predicted Protein Size:	~ 18 kDa
Gene Name:	synuclein alpha
Database Link:	<u>Entrez Gene 6622 Human P37840</u>



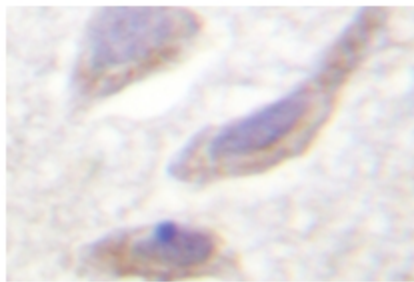
[View online »](#)

Background:

The synuclein family members, including α -synuclein (also designated NACP for non- β Amyloid component) and β -synuclein, are predominantly expressed in the brain and are speculated to be involved in synaptic regulation and neuronal plasticity. α -synuclein is localized to neuronal cell bodies and synapses. α -synuclein was first identified as a component of Alzheimer's disease amyloid plaques. Abnormal platelet function in Alzheimer's disease has been demonstrated. During megakaryocytic differentiation α -synuclein has been found to be upregulated, while β -synuclein is downregulated, indicating that coordinate expression of synucleins may be important during hematopoietic cell differentiation. A mutant form of α -synuclein has been found in patients with early onset Parkinson's disease.

Synonyms:

NACP, PARK1

Product images:


Immunohistochemistry (IHC) analysis of SNCA antibody (Cat.-No.: [AP01870PU-N]) in paraffin-embedded human brain tissue.