

Product datasheet for **AP01821PU-S**

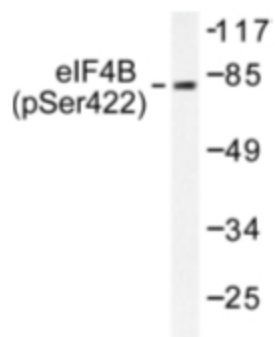
EIF4B pSer422 Rabbit Polyclonal Antibody

Product data:

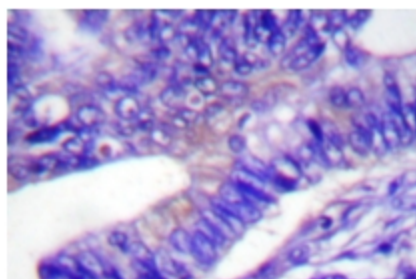
Product Type:	Primary Antibodies
Applications:	IF, IHC, WB
Recommended Dilution:	Western Blot: 1/500-1/1000. Immunohistochemistry on paraffin sections 1/50-1/200. Immunofluorescence: 1/50-1/200.
Reactivity:	Human, Mouse, Rat
Host:	Rabbit
Clonality:	Polyclonal
Specificity:	This antibody detects endogenous levels of eIF4B pSer422 protein.
Formulation:	Phosphate buffered saline (PBS), pH~7.2 containing 0.05% Sodium Azide as preservative State: Aff - Purified State: Liquid purified Ig fraction (> 95% pure by SDS-PAGE)
Concentration:	1.0 mg/ml
Purification:	Affinity Chromatography using epitope-specific immunogen
Conjugation:	Unconjugated
Storage:	Store the antibody undiluted at 2-8°C for one month or (in aliquots) at -20°C for longer. Avoid repeated freezing and thawing.
Stability:	Shelf life: One year from despatch.
Predicted Protein Size:	~ 80 kDa
Gene Name:	eukaryotic translation initiation factor 4B
Database Link:	Entrez Gene 1975 Human P23588
Background:	eIF4B is required for the binding of mRNA to ribosomes. It functions in close association with eIF4F and eIF4A. It binds near the 5'-terminal cap of mRNA in the presence of eIF4F and ATP. It promotes the ATPase activity and the ATP-dependent RNA unwinding activity of both eIF4A and eIF4F.
Synonyms:	Eukaryotic translation initiation factor 4B, eIF-4B



[View online »](#)

Product images:

Western blot (WB) analysis of eIF4B pSer422 antibody (Cat.-No.: [AP01821PU-N]) in extracts from NIH/3T3 cells.



Immunohistochemistry (IHC) analyzes of eIF4B pSer422 antibody (Cat.-No.: [AP01821PU-N]) in paraffin-embedded human colon carcinoma tissue.