

## Product datasheet for **AP01763PU-S**

### MAPT / TAU pThr231 Rabbit Polyclonal Antibody

#### Product data:

Product Type:	Primary Antibodies
Applications:	WB
Recommended Dilution:	<b>Western blot:</b> 1/500-1/1000.
Reactivity:	Human, Mouse, Rat
Host:	Rabbit
Clonality:	Polyclonal
Specificity:	This antibody detects endogenous levels of Tau pThr231 protein.
Formulation:	Phosphate buffered saline (PBS), pH~7.2 containing 0.05% Sodium Azide as preservative. State: Aff - Purified State: Liquid purified Ig fraction (> 95% pure by SDS-PAGE).
Concentration:	1.0 mg/ml
Purification:	Affinity Chromatography using epitope-specific immunogen.
Conjugation:	Unconjugated
Storage:	Store the antibody undiluted at 2-8°C for one month or (in aliquots) at -20°C for longer. Avoid repeated freezing and thawing.
Stability:	Shelf life: One year from despatch.
Predicted Protein Size:	~ 50-80 kDa
Gene Name:	microtubule associated protein tau
Database Link:	<a href="#">Entrez Gene 4137 Human P10636</a>



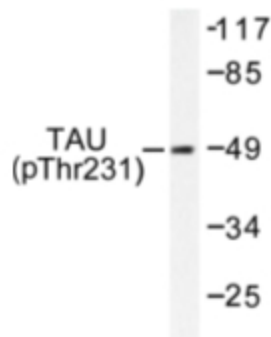
[View online »](#)

**Background:**

The Tau family of proteins consists of six isoforms, which become abnormally hyperphosphorylated and accumulate in the form of paired helical filaments in the brains of patients with Alzheimer's disease. p-Tau can be dephosphorylated by protein phosphatase PP-2B, PP-2A and PP-1, which are all present in neurons. p-Tau is predominately present in neuronal somata and dendrites and, to a lesser extent in axons. PKN specifically phosphorylates Tau to serve as a regulator of microtubules. The phosphorylation state and distribution of Tau can be modulated by insulin and insulin-like growth factor-1 signaling pathways involving glycogen synthase kinase-3 $\beta$ , suggesting that insulin and insulin-growth factor-1 may contribute to the reorganization of the cytoskeleton, which is necessary for the development and growth of the neurites. 14-3-3  $\zeta$  can associate with both Tau and p-Tau that stimulates cAMP-dependent kinase to phosphorylate Tau, suggesting that 14-3-3  $\zeta$  is a Tau effector that may be involved in the abnormal Tau phosphorylation.

**Synonyms:**

MAPTL, MTBT1, Microtubule-associated protein tau, PHF-tau, Neurofibrillary tangle protein, Paired helical filament-tau

**Product images:**

Western blot (WB) analysis of Tau pThr231 antibody (Cat.-No.: [AP01763PU-N]) in extracts from MDA-MB-435 or K562 or A2780 or COLO205 cells or mouse brain.