

## Product datasheet for **AP01726PU-M**

### Amyloid Precursor Protein (APP) pThr668 Rabbit Polyclonal Antibody

#### Product data:

Product Type:	Primary Antibodies
Applications:	IF, IHC, WB
Recommended Dilution:	<b>Western Blot:</b> 1/500-1/1000. <b>Immunohistochemistry on paraffin sections</b> 1/50-1/200. <b>Immunofluorescence:</b> 1/50-1/200.
Reactivity:	Human, Mouse, Rat
Host:	Rabbit
Clonality:	Polyclonal
Immunogen:	Synthetic phosphopeptide derived from human APP/ $\beta$ -Amyloid around the phosphorylation site of Threonine 668.
Specificity:	This antibody detects endogenous levels of Amyloid-beta A4 pThr743/668 protein.
Formulation:	Phosphate buffered saline (PBS), pH~7.2 containing 0.05% Sodium Azide as preservative. State: Aff - Purified State: Liquid purified Ig fraction (> 95% pure by SDS-PAGE).
Concentration:	1.0 mg/ml
Purification:	Affinity Chromatography using epitope-specific immunogen.
Conjugation:	Unconjugated
Storage:	Store the antibody undiluted at 2-8°C for one month or (in aliquots) at -20°C for longer. Avoid repeated freezing and thawing.
Stability:	Shelf life: One year from despatch.
Predicted Protein Size:	~ 70-140 kDa
Gene Name:	amyloid beta precursor protein
Database Link:	<a href="#">Entrez Gene 351 Human P05067</a>



[View online »](#)

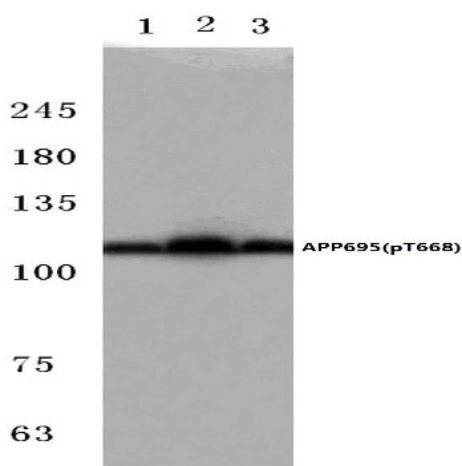
## Background:

Beta Amyloid A4 (APP) is the principle protein implicated in the development of Alzheimer's disease; a debilitating neurodegenerative condition characterized by the loss of cognitive skills and severe behavioral changes (dementia). Beta Amyloid A4 is a cell surface receptor and transmembrane precursor protein that is cleaved by secretases to form a number of peptides. Some of these peptides are secreted and can bind to the acetyltransferase complex APBB1/TIP60 to promote transcriptional activation, while others form the protein basis of the amyloid plaques found in the brains of patients with Alzheimer disease. Mutations in this gene have been implicated in autosomal dominant Alzheimer disease and cerebroarterial amyloidosis (cerebral amyloid angiopathy).

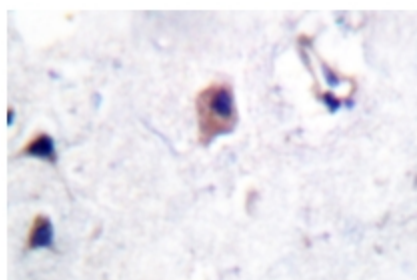
## Synonyms:

Alzheimer disease amyloid protein, Amyloid Precursor Protein, ABPP, APPI, PreA4, Cerebral vascular amyloid peptide, CVAP

## Product images:



Western blot (WB) analysis of Amyloid-beta A4 pThr668 antibody in extracts from HeLa cells at 1/500 dilution: Lane 1: MCF-7 celllysate treated with colchicine. Lane 2: Mouse Liver tissue lysate. Lane 3: Rat Liver tissue lysate.



Immunohistochemistry (IHC) analysis of Amyloid-beta A4 pThr668 antibody in paraffin-embedded human brain tissue.