

Product datasheet for **AP01718PU-M**

VEGF Receptor 2 (KDR) pTyr951 Rabbit Polyclonal Antibody

Product data:

Product Type:	Primary Antibodies
Applications:	IF, IHC, WB
Recommended Dilution:	Western Blot: 1/500-1/1000. Immunofluorescence: 1/50-1/200. Immunohistochemistry on Paraffin Sections: 1/50-1/200.
Reactivity:	Human, Mouse
Host:	Rabbit
Clonality:	Polyclonal
Specificity:	This antibody detects endogenous levels of VEGFR2 protein only when phosphorylated at Tyr951.
Formulation:	PBS, pH~7.2 State: Aff - Purified State: Liquid purified Ig fraction (> 95% pure by SDS-PAGE) Preservative: 0.05% Sodium Azide
Concentration:	1.0 mg/ml
Purification:	Affinity Chromatography using epitope-specific immunogen
Conjugation:	Unconjugated
Storage:	Store undiluted at 2-8°C for one month or (in aliquots) at -20°C for longer. Avoid repeated freezing and thawing.
Stability:	Shelf life: One year from despatch.
Predicted Protein Size:	~152 kDa
Gene Name:	kinase insert domain receptor
Database Link:	Entrez Gene 3791 Human P35968



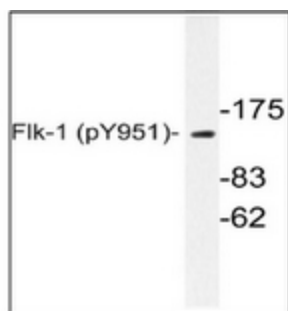
[View online »](#)

Background:

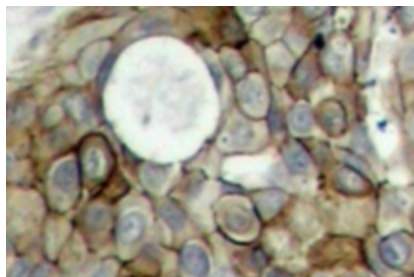
VEGF receptor 2 is a member of a receptor tyrosine kinase family whose activation plays an essential role in a large number of biological processes such as embryonic development, wound healing, cell proliferation, migration and differentiation. Like other growth factor receptors, upon ligand binding VEGF receptor 2 dimerises and is autophosphorylated on multiple tyrosine residues. These sites can be involved in the regulation of kinase activity or serve as binding sites for SH2 and phosphotyrosine binding containing signalling proteins. Phosphorylation of Tyrosines 1054 and 1059 in the activation loop is required for activation of VEGF receptor 2 and its intrinsic tyrosine kinase activity.

Synonyms:

VEGFR2, FLK1, KDR, VEGF Receptor 2

Product images:


Western blot analysis of VEGFR2 pTyr951 Antibody Cat.-No [AP01718PU-N] in extracts from SK-OV3 cells.



Immunohistochemistry analysis of VEGFR2 pTyr951 Antibody Cat.-No [AP01718PU-N] in paraffin-embedded human breast carcinoma tissue.