

## Product datasheet for **AP01708PU-M**

### **MAPT / TAU pSer404 Rabbit Polyclonal Antibody**

#### **Product data:**

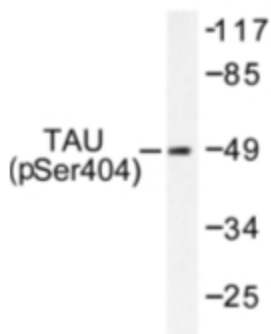
Product Type:	Primary Antibodies
Applications:	WB
Recommended Dilution:	<b>Western Blot:</b> 1/500-1/1000.
Reactivity:	Human, Mouse, Rat
Host:	Rabbit
Clonality:	Polyclonal
Specificity:	This antibody detects endogenous levels of Tau pSer404 protein.
Formulation:	Phosphate buffered saline (PBS), pH~7.2 containing 0.05% Sodium Azide as preservative. State: Aff - Purified State: Liquid purified Ig fraction (> 95% pure by SDS-PAGE).
Concentration:	1.0 mg/ml
Purification:	Affinity Chromatography using epitope-specific immunogen.
Conjugation:	Unconjugated
Storage:	Store the antibody undiluted at 2-8°C for one month or (in aliquots) at -20°C for longer. Avoid repeated freezing and thawing.
Stability:	Shelf life: One year from despatch.
Predicted Protein Size:	~78.0 kDa
Gene Name:	microtubule associated protein tau
Database Link:	<a href="#">Entrez Gene 4137 Human P10636</a>
Background:	Tau can be phosphorylated by several protein kinases. Phosphorylation by Tau protein kinase II at Serine 404 is primarily responsible for the functional loss of Tau-mediated tubulin polymerization. In addition, phosphorylation of microtubule-associated Tau results in the dissociation of Tau from the microtubules and tubulin depolymerization. Serine 412 of Tau is modified by Tau protein kinase I/glycogen synthase kinase-3 beta (TPKI/GSK-3 $\beta$ ) to disrupt neuronal metabolism in anatomical areas vulnerable to Alzheimer's disease. TPKI/GSK-3 $\beta$ is expressed primarily in neurons and especially in neurites early in development, whereafter the distribution is concentrated mostly in the cell soma and the proximal neurite region



[View online »](#)

**Synonyms:** MAPTL, MTBT1, Microtubule-associated protein tau, PHF-tau, Neurofibrillary tangle protein, Paired helical filament-tau

**Product images:**



Western blot (WB) analysis of Tau pSer404 antibody in extracts from 293 cells treated with UV or mouse brain.