

## Product datasheet for **AP01698PU-N**

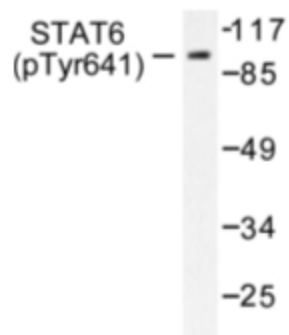
### STAT6 pTyr641 Rabbit Polyclonal Antibody

#### Product data:

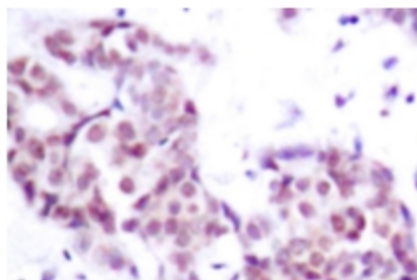
Product Type:	Primary Antibodies
Applications:	IHC, WB
Recommended Dilution:	<b>Western Blot:</b> 1/500-1/1000. <b>Immunohistochemistry on paraffin sections</b> 1/50-1/200.
Reactivity:	Human, Mouse
Host:	Rabbit
Clonality:	Polyclonal
Specificity:	This antibody detects endogenous levels of STAT6 pTyr641 protein.
Formulation:	Phosphate buffered saline (PBS), pH~7.2 containing 0.05% Sodium Azide as preservative. State: Aff - Purified State: Liquid purified Ig fraction (> 95% pure by SDS-PAGE).
Concentration:	1.0 mg/ml
Purification:	Affinity Chromatography using epitope-specific immunogen.
Conjugation:	Unconjugated
Storage:	Store the antibody undiluted at 2-8°C for one month or (in aliquots) at -20°C for longer. Avoid repeated freezing and thawing.
Stability:	Shelf life: One year from despatch.
Predicted Protein Size:	~ 94 kDa
Gene Name:	signal transducer and activator of transcription 6
Database Link:	<a href="#">Entrez Gene 6778 Human P42226</a>
Background:	STAT6 protein is a transcription factor activated by cytokines, particularly interleukin 4 and IL 13. (STAT6 <sup>-/-</sup> ) were found to be deficient in IL 4 mediated functions including Th2 helper T cell differentiation, expression of cell surface markers, T cell proliferation, immunoglobulin class switching to IgE, and partial loss of IL 4 mediated proliferation. STAT6 mRNA has been detected in peripheral blood lymphocytes, colon, intestine, ovary, prostate, thymus, spleen, kidney, liver, lung and placenta. STAT6 is critically involved in Th2 immune response.
Synonyms:	IL-4 Stat



[View online »](#)

**Product images:**

Western blot (WB) analysis of STAT6 pTyr641 antibody (Cat.-No.: AP01698PU-N) in extracts from HeLa cells.



Immunohistochemistry (IHC) analyzes of STAT6 pTyr641 antibody (Cat.-No.: AP01698PU-N) in paraffin-embedded human breast carcinoma tissue.