

Product datasheet for **AP01698PU-M**

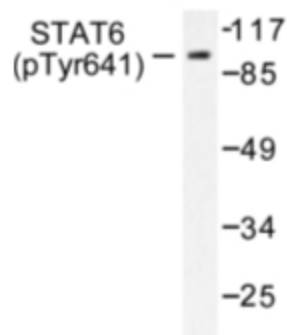
STAT6 pTyr641 Rabbit Polyclonal Antibody

Product data:

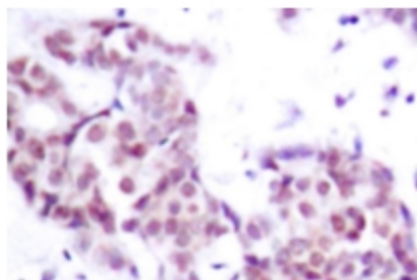
| | |
|-------------------------|--|
| Product Type: | Primary Antibodies |
| Applications: | IHC, WB |
| Recommended Dilution: | Western Blot: 1/500-1/1000. Immunohistochemistry on paraffin sections 1/50-1/200. |
| Reactivity: | Human, Mouse |
| Host: | Rabbit |
| Clonality: | Polyclonal |
| Specificity: | This antibody detects endogenous levels of STAT6 pTyr641 protein. |
| Formulation: | Phosphate buffered saline (PBS), pH~7.2 containing 0.05% Sodium Azide as preservative. State: Aff - Purified State: Liquid purified Ig fraction (> 95% pure by SDS-PAGE). |
| Concentration: | 1.0 mg/ml |
| Purification: | Affinity Chromatography using epitope-specific immunogen. |
| Conjugation: | Unconjugated |
| Storage: | Store the antibody undiluted at 2-8°C for one month or (in aliquots) at -20°C for longer. Avoid repeated freezing and thawing. |
| Stability: | Shelf life: One year from despatch. |
| Predicted Protein Size: | ~ 94 kDa |
| Gene Name: | signal transducer and activator of transcription 6 |
| Database Link: | Entrez Gene 6778 Human P42226 |
| Background: | STAT6 protein is a transcription factor activated by cytokines, particularly interleukin 4 and IL 13. (STAT6 ^{-/-}) were found to be deficient in IL 4 mediated functions including Th2 helper T cell differentiation, expression of cell surface markers, T cell proliferation, immunoglobulin class switching to IgE, and partial loss of IL 4 mediated proliferation. STAT6 mRNA has been detected in peripheral blood lymphocytes, colon, intestine, ovary, prostate, thymus, spleen, kidney, liver, lung and placenta. STAT6 is critically involved in Th2 immune response. |
| Synonyms: | IL-4 Stat |



[View online »](#)

Product images:


Western blot (WB) analysis of STAT6 pTyr641 antibody (Cat.-No.: [AP01698PU-N]) in extracts from HeLa cells.



Immunohistochemistry (IHC) analyzes of STAT6 pTyr641 antibody (Cat.-No.: [AP01698PU-N]) in paraffin-embedded human breast carcinoma tissue.