

Product datasheet for **AP01697PU-M**

STAT6 pThr645 Rabbit Polyclonal Antibody

Product data:

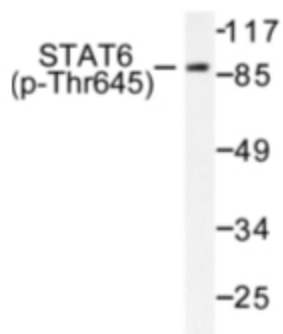
Product Type:	Primary Antibodies
Applications:	ELISA, IHC, IP, WB
Recommended Dilution:	ELISA: 1/10000-1/20000. Western Blot: 1/500-1/1000. Immunoprecipitation: 1/50-1/200. Immunohistochemistry on Paraffin Sections: 1/50-1/200.
Reactivity:	Human, Mouse
Host:	Rabbit
Clonality:	Polyclonal
Specificity:	This antibody detects endogenous levels of STAT6 pThr645 protein.
Formulation:	Phosphate buffered saline (PBS), pH~7.2 containing 15 mM Sodium Azide as preservative. State: Aff - Purified State: Liquid purified Ig fraction (> 95% pure by SDS-PAGE).
Concentration:	1.0 mg/ml
Purification:	Affinity Chromatography using epitope-specific immunogen.
Conjugation:	Unconjugated
Storage:	Store the antibody undiluted at 2-8°C for one month or (in aliquots) at -20°C for longer. Avoid repeated freezing and thawing.
Stability:	Shelf life: One year from despatch.
Gene Name:	signal transducer and activator of transcription 6
Database Link:	Entrez Gene 6778 Human P42226
Background:	STAT6 protein is a transcription factor activated by cytokines, particularly interleukin 4 and IL 13. (STAT6 ^{-/-}) were found to be deficient in IL 4 mediated functions including Th2 helper T cell differentiation, expression of cell surface markers, T cell proliferation, immunoglobulin class switching to IgE, and partial loss of IL 4 mediated proliferation. STAT6 mRNA has been detected in peripheral bloodlymphocytes, colon, intestine, ovary, prostate, thymus, spleen, kidney, liver, lung and placenta. STAT6 is critically involved in Th2 immune response.



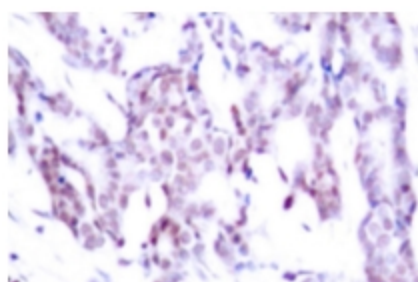
[View online »](#)

Synonyms: IL-4 Stat

Product images:



Western blot (WB) analysis of STAT6 pThr645 antibody in extracts from HeLa cells.



Immunohistochemistry (IHC) analyzes of STAT6 pThr645 antibody in paraffin-embedded human breast carcinoma tissue.