

Product datasheet for **AP01696PU-M**

STAT5A pTyr694 Rabbit Polyclonal Antibody

Product data:

Product Type:	Primary Antibodies
Applications:	IHC, WB
Recommended Dilution:	Western Blot: 1/500-1/1000. Immunohistochemistry on paraffin sections 1/50-1/200.
Reactivity:	Human, Mouse, Rat
Host:	Rabbit
Clonality:	Polyclonal
Specificity:	This antibody detects endogenous levels of STAT5A pTyr694 protein.
Formulation:	Phosphate buffered saline (PBS), pH~7.2 containing 0.05% Sodium Azide as preservative. State: Aff - Purified State: Liquid purified Ig fraction (> 95% pure by SDS-PAGE).
Concentration:	1.0 mg/ml
Purification:	Affinity Chromatography using epitope-specific immunogen.
Conjugation:	Unconjugated
Storage:	Store the antibody undiluted at 2-8°C for one month or (in aliquots) at -20°C for longer. Avoid repeated freezing and thawing.
Stability:	Shelf life: One year from despatch.
Predicted Protein Size:	~ 91 kDa
Gene Name:	signal transducer and activator of transcription 5A
Database Link:	Entrez Gene 6776 Human P42229



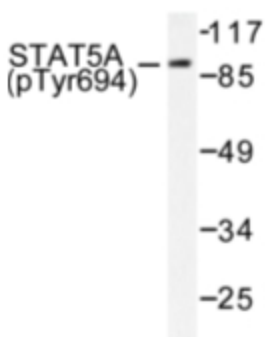
[View online »](#)

Background:

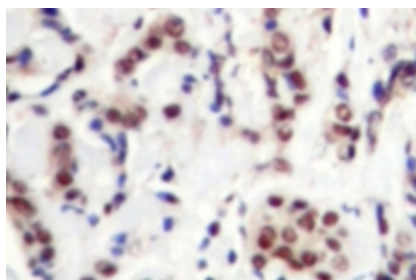
Stat5 (signal transducers and activators of transcription 5) is important in regulating T cell functions involving the receptors for Interleukin-2 (IL-2). IL-2 stimulates the rapid phosphorylation of both serine and tyrosine residues of Stat5 α and Stat5 β in human T lymphocytes and in several IL-2-responsive lymphocytic cell lines. IL-2 differentially induces serine phosphorylation of Stat5 α and Stat5 β on Ser 726 and Ser 731, respectively. Stat5 β is preferentially phosphorylated and displays more protracted serine phosphorylation kinetics than Stat5 α . Both the acid-rich region and the COOH terminus of IL-2R β can independently mediate IL-2-induced Stat5 α/β serine phosphorylation, suggesting that Stat5 α/β serine phosphorylation occurs at a postreceptor level. Stat5 α is phosphorylated on Tyr 694 in a prolactin-sensitive manner, whereas serine phosphorylation is constitutive. Activation of Stat5 by IL-2 may help govern the biological effects of IL-2 during the immune response. Ser 779 is constitutively phosphorylated in the mammary gland, and Ser 725 phosphorylation influences prolactin-stimulated in vitro DNA binding activity.

Synonyms:

STAT-5, STAT-5A, Mammary gland factor, MGF

Product images:


Western blot (WB) analysis of STAT5A ptyr694 antibody (Cat.-No.: [AP01696PU-N]) in extracts from HeLa cells treated with EGF.



Immunohistochemistry (IHC) analyzes of STAT5A ptyr694 antibody (Cat.-No.: [AP01696PU-N]) in paraffin-embedded human breast carcinoma tissue.