

Product datasheet for **AP01695PU-S**

STAT5A pSer780 Rabbit Polyclonal Antibody

Product data:

Product Type:	Primary Antibodies
Applications:	IHC, IP, WB
Recommended Dilution:	Western Blot: 1/500-1/1000. Immunohistochemistry on paraffin sections 1/50-1/200. Immunoprecipitation: 1/50-1/200.
Reactivity:	Human, Mouse, Rat
Host:	Rabbit
Clonality:	Polyclonal
Immunogen:	Synthetic phosphopeptide derived from human Stat5a around the phosphorylation site of Serine 780.
Specificity:	This antibody detects endogenous levels of STAT5A pSer780 protein.
Formulation:	Phosphate buffered saline (PBS), pH~7.2 containing 0.05% Sodium Azide as preservative. State: Aff - Purified State: Liquid purified Ig fraction (> 95% pure by SDS-PAGE).
Concentration:	1.0 mg/ml
Purification:	Affinity Chromatography using epitope-specific immunogen.
Conjugation:	Unconjugated
Storage:	Store the antibody undiluted at 2-8°C for one month or (in aliquots) at -20°C for longer. Avoid repeated freezing and thawing.
Stability:	Shelf life: One year from despatch.
Predicted Protein Size:	~ 90 kDa
Gene Name:	signal transducer and activator of transcription 5A
Database Link:	Entrez Gene 6776 Human P42229



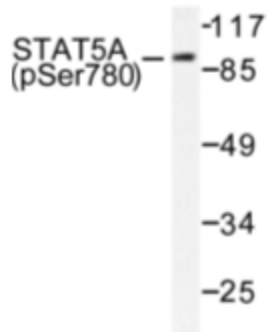
[View online »](#)

Background:

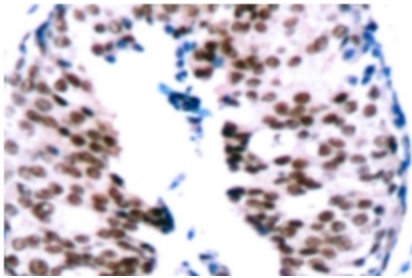
Stat 5a protein is a transcription factor activated by hormone and cytokines. Two highly related, but distinct Stat 5 genes (Stat 5a and Stat 5b) were identified in mouse. The amino acid sequences of Stat 5a and Stat 5b show 96% sequence similarity, and both proteins are co expressed in most tissues of both virgin and lactating mice. However, differential accumulation of Stat 5a and Stat 5b mRNA has been reported for both muscle and mammary tissue. Stat 5a is critically involved in a variety of physiological functions, including reproduction, lactation, immune function and somatic growth.

Synonyms:

STAT-5, STAT-5A, Mammary gland factor, MGF

Product images:

Western blot (WB) analysis of STAT5A pSer780 antibody in extracts from HeLa cells.



Immunohistochemistry (IHC) analyzes of STAT5A pSer780 antibody in paraffin-embedded human breast carcinoma tissue.