

## Product datasheet for **AP01691PU-S**

### STAT3 pSer727 Rabbit Polyclonal Antibody

#### Product data:

Product Type:	Primary Antibodies
Applications:	IHC, IP, WB
Recommended Dilution:	<b>Western Blot:</b> 1/500-1/1000. <b>Immunohistochemistry on paraffin sections</b> 1/50-1/200. <b>Immunoprecipitation:</b> Use at an assay dependent dilution .
Reactivity:	Human, Mouse, Rat
Host:	Rabbit
Clonality:	Polyclonal
Specificity:	This antibody detects endogenous levels of STAT3 pSer727 protein.
Formulation:	Phosphate buffered saline (PBS), pH~7.2 containing 15 mM Sodium Azide as preservative. State: Aff - Purified State: Liquid purified Ig fraction (> 95% pure by SDS-PAGE).
Concentration:	1.0 mg/ml
Purification:	Affinity Chromatography using epitope-specific immunogen.
Conjugation:	Unconjugated
Storage:	Store the antibody undiluted at 2-8°C for one month or (in aliquots) at -20°C for longer. Avoid repeated freezing and thawing.
Stability:	Shelf life: One year from despatch.
Predicted Protein Size:	~ 85 kDa
Gene Name:	signal transducer and activator of transcription 3
Database Link:	<a href="#">Entrez Gene 6774 Human P40763</a>



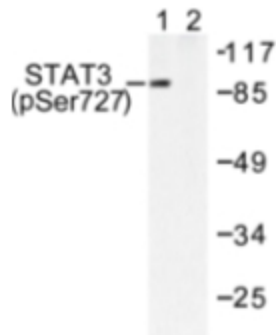
[View online »](#)

**Background:**

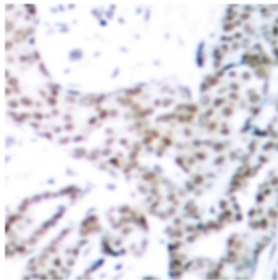
STAT1 and STAT2 are induced by IFN alpha and form 1, a heterodimer which is part of the ISGF transcription factor complex. The STAT3 protein is expressed in most cell types and is activated by multiple cytokines and growth factors including: IFN $\alpha$ , IL10, IL6, IL11, IL12, IL2, EGF, among others. STAT3 beta appears to be activated by both EGF and IL6, but STAT3 alpha is only activated by EGF. STAT3 binds to DNA as either a homodimer or as a heterodimer with STAT1. STAT3 interacts with the APRE (acute phase response element) and SIE (cis-inducible element). STAT4, predominantly expressed in testis and myeloid cells, is activated by IL12. STAT5 is activated by prolactin and IL3. STAT6 participates in signaling pathways mediated by IL4.

**Synonyms:**

STAT-3, Acute-phase response factor, APRF

**Product images:**

Western blot (WB) analysis of STAT3 pSer727 antibody (Cat.-No.: [AP01691PU-N]) in extracts from HeLa cells.



Immunohistochemistry (IHC) analysis of STAT3 pSer727 antibody (Cat.-No.: [AP01691PU-N]) in paraffin-embedded human breast carcinoma tissue.