

## Product datasheet for **AP01679PU-M**

### MEK4 (MAP2K4) pThr261 Rabbit Polyclonal Antibody

#### Product data:

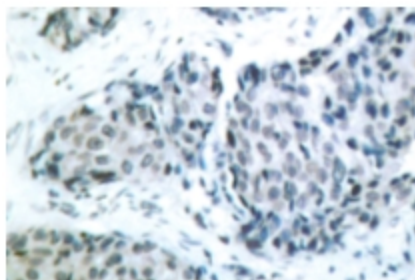
Product Type:	Primary Antibodies
Applications:	IHC, WB
Recommended Dilution:	<b>Western Blot:</b> 1/500-1/1000. <b>Immunohistochemistry on paraffin sections</b> 1/50-1/200.
Reactivity:	Human, Mouse, Rat
Host:	Rabbit
Clonality:	Polyclonal
Specificity:	This antibody detects endogenous levels of SEK1/MKK4 pThr261 protein.
Formulation:	Phosphate buffered saline (PBS), pH~7.2 containing 0.05% Sodium Azide as preservative. State: Aff - Purified State: Liquid purified Ig fraction (> 95% pure by SDS-PAGE).
Concentration:	1.0 mg/ml
Purification:	Affinity Chromatography using epitope-specific immunogen.
Conjugation:	Unconjugated
Storage:	Store the antibody undiluted at 2-8°C for one month or (in aliquots) at -20°C for longer. Avoid repeated freezing and thawing.
Stability:	Shelf life: One year from despatch.
Predicted Protein Size:	~ 48 kDa
Gene Name:	mitogen-activated protein kinase kinase 4
Database Link:	<a href="#">Entrez Gene 6416 Human P45985</a>
Background:	This gene encodes a dual specificity protein kinase that belongs to the Ser/Thr protein kinase family. This kinase is a direct activator of MAP kinases in response to various environmental stresses or mitogenic stimuli. It has been shown to activate MAPK8 / JNK1, MAPK9 / JNK2, and MAPK14 / p38, but not MAPK1 / ERK2 or MAPK3 / ERK3. This kinase is phosphorylated, and thus activated by MAP3K1 / MEKK. The knockout studies in mice suggested the roles of this kinase in mediating survival signal in T cell development, as well as in the organogenesis of liver



[View online »](#)

**Synonyms:** JNK-activating kinase 1, MAP Kinase Kinase 4, SAPK/ERK kinase 1, PRKMK4, SERK1, MEK-4, MAPKK4, MKK4

**Product images:**



Immunohistochemistry (IHC) analysis of SEK1/MKK4 pThr261 antibody (Cat.-No.: [AP01679PU-N]) in paraffin-embedded human breast carcinoma tissue.