

Product datasheet for **AP01677PU-M**

Rb (RB1) pSer807 Rabbit Polyclonal Antibody

Product data:

Product Type:	Primary Antibodies
Applications:	IHC, WB
Recommended Dilution:	Western Blot: 1/500-1/1000. Immunohistochemistry on paraffin sections 1/50-1/200.
Reactivity:	Human, Mouse, Rat
Host:	Rabbit
Clonality:	Polyclonal
Specificity:	This antibody detects endogenous levels of Rb pSer807 protein.
Formulation:	Phosphate buffered saline (PBS), pH~7.2 containing 0.05% Sodium Azide as preservative. State: Aff - Purified State: Liquid purified Ig fraction (> 95% pure by SDS-PAGE).
Concentration:	1.0 mg/ml
Purification:	Affinity Chromatography using epitope-specific immunogen.
Conjugation:	Unconjugated
Storage:	Store the antibody undiluted at 2-8°C for one month or (in aliquots) at -20°C for longer. Avoid repeated freezing and thawing.
Stability:	Shelf life: One year from despatch.
Predicted Protein Size:	~ 106 kDa
Gene Name:	RB transcriptional corepressor 1
Database Link:	Entrez Gene 5925 Human P06400



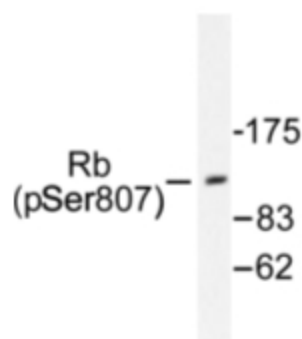
[View online »](#)

Background:

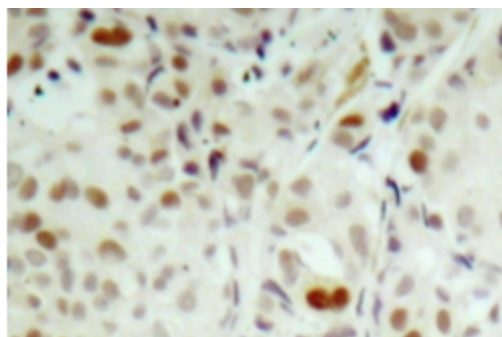
The genetic predisposition to retinoblastoma is transmitted by mutant alleles of the retinoblastoma susceptibility gene (Rb). Rb encodes a phosphorylated protein of approximately 110 kDa that accumulates in the nuclei of most vertebrate cells, but is lacking in all retinoblastomas examined to date. Mutations in Rb have been found in a wide variety of human tumors. The carboxy terminal domain of Rb p110 binds DNA, although no sequence specificity for this binding has been demonstrated. Inactivation of Rb can be mediated by its binding to the transforming proteins of several DNA tumor viruses, including SV40 T antigen and adenovirus E1A, perhaps accounting for their transforming function. Rb p110 is differentially phosphorylated during the cell cycle, implicating a possible role in cell cycle regulation.

Synonyms:

Retinoblastoma 1, Rb, p105-Rb, pRb, pp110, OSRC

Product images:


Western blot (WB) analysis of Rb pSer807 antibody (Cat.-No.: [AP01677PU-N]) in extracts from K562 cells treated with serum 10%.



Immunohistochemistry (IHC) analyzes of Rb pSer807 antibody (Cat.-No.: [AP01677PU-N]) in paraffin-embedded human breast carcinoma tissue.