

Product datasheet for **AP01667PU-S**

PKC zeta (PRKCZ) pThr410 Rabbit Polyclonal Antibody

Product data:

| | |
|-------------------------|---|
| Product Type: | Primary Antibodies |
| Applications: | IF, IHC, WB |
| Recommended Dilution: | Western Blot: 1/500-1/1000. Immunofluorescence: 1/50-1/200. Immunohistochemistry on Paraffin Sections: 1/50-1/200. |
| Reactivity: | Human, Mouse, Rat |
| Host: | Rabbit |
| Clonality: | Polyclonal |
| Specificity: | This antibody detects endogenous levels of PKCZ pThr410 protein. |
| Formulation: | Phosphate buffered saline (PBS), pH~7.2 containing 0.05% Sodium Azide as preservative. State: Aff - Purified State: Liquid purified Ig fraction (> 95% pure by SDS-PAGE). |
| Concentration: | 1.0 mg/ml |
| Purification: | Affinity Chromatography using epitope-specific immunogen. |
| Conjugation: | Unconjugated |
| Storage: | Store the antibody undiluted at 2-8°C for one month or (in aliquots) at -20°C for longer. Avoid repeated freezing and thawing. |
| Stability: | Shelf life: One year from despatch. |
| Predicted Protein Size: | ~70 kDa |
| Gene Name: | protein kinase C zeta |
| Database Link: | Entrez Gene 5590 Human Q05513 |



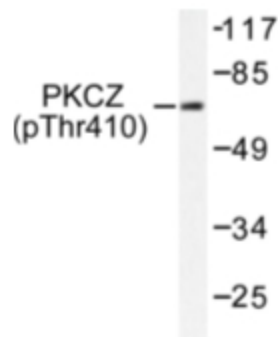
[View online »](#)

Background:

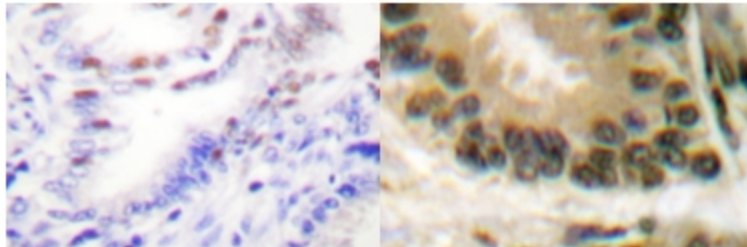
Members of the protein kinase C (PKC) family play a key regulatory role in a variety of cellular functions including cell growth and differentiation, gene expression, hormone secretion and membrane function. PKCs were originally identified as serine/threonine protein kinases whose activity was dependent on calcium and phospholipids. Diacylglycerols (DAG) and tumor promoting phorbol esters bind to and activate PKC. PKCs can be subdivided into at least two major classes including conventional (c) PKC isoforms (α , β I, β II and γ) and novel (n) PKC isoforms (δ , ϵ , ζ , η and θ). Patterns of expression for each PKC isoform differs among tissues and PKC family members exhibit clear differences in their cofactor dependencies. For instance, the kinase activities of nPKC δ and ϵ are independent of Ca^{++} . On the other hand, nPKC δ and ϵ , as well as all of the cPKC members, possess phorbol ester-binding activities and kinase activities.

Synonyms:

nPKC-zeta, PKC-zeta, PKC zeta, PKC2, Protein kinase C zeta type

Product images:

Western blot (WB) analysis of PKCZ pThr410 antibody (Cat.-No.: [AP01667PU-N]) in extracts from NIH/3T3 cells.



Immunohistochemistry (IHC) analysis of PKCZ pThr410 antibody (Cat.-No.: [AP01667PU-N]) in paraffin-embedded human lung carcinoma tissue.