

## Product datasheet for **AP01654PU-M**

### **p21 (CDKN1A) pThr145 Rabbit Polyclonal Antibody**

#### Product data:

Product Type:	Primary Antibodies
Applications:	ELISA, IHC, WB
Recommended Dilution:	<b>ELISA:</b> 1/10000-1/20000. <b>Western Blot:</b> 1/500-1/1000. <b>Immunohistochemistry on Paraffin Sections:</b> 1/50-1/200.
Reactivity:	Human, Mouse, Rat
Host:	Rabbit
Clonality:	Polyclonal
Specificity:	This antibody detects endogenous levels of p21Cip1 p53 protein when phosphorylated at Thr145
Formulation:	Phosphate buffered saline (PBS), pH~7.2 State: Aff - Purified State: Liquid purified Ig fraction (> 95% pure by SDS-PAGE) Preservative: 0.05% Sodium Azide
Concentration:	1.0 mg/ml
Purification:	Affinity Chromatography using epitope-specific immunogen
Conjugation:	Unconjugated
Storage:	Store undiluted at 2-8°C for one month or (in aliquots) at -20°C for longer. Avoid repeated freezing and thawing.
Stability:	Shelf life: One year from despatch.
Predicted Protein Size:	~21.0 kDa
Gene Name:	cyclin-dependent kinase inhibitor 1A
Database Link:	<a href="#">Entrez Gene 1026 Human P38936</a>



[View online »](#)

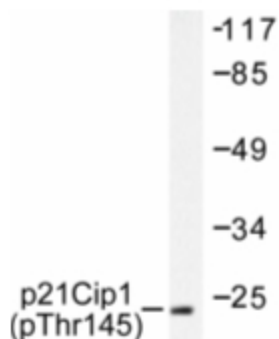
**Background:**

The p53-inducible gene product, p21(WAF1/CIP1), plays a critical role in regulating the rate of tumor incidence. p21 is a kinase inhibitor that was originally identified as a cyclin-dependent kinase and PCNA-binding protein ble to inhibit Cdk catalytic activity and as a gene whose expression was induced by the tumor suppressor protein p53. p21 contributes to the regulation of cell division, mediation of negative growth signals, differentiation and senescence, modulation of the apoptotic response and activaion of certain cyclin-Cdks in response to mitogenic signals. Serine 146 is a phosphorylation site within the carboxy terminal regulatory domain of p21 and when modified in vivo influences p21-PCNA interactions.

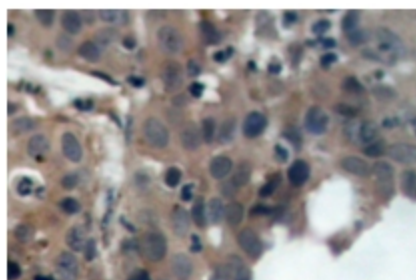
**Synonyms:**

CAP20, CDKN1, CIP1, MDA6, MDA-6, PIC1, SDI1, WAF1

**Product images:**



Western blot (WB) analysis of p21 Cip1 pThr145 antibody in extracts from HeLa cells.



Immunohistochemistry (IHC) analysis of p21Cip1 pThr145 antibody in paraffin-embedded human breast carcinoma tissue.