

## Product datasheet for **AP01650PU-N**

### **NF-kB p65 (RELA) pSer536 Rabbit Polyclonal Antibody**

#### **Product data:**

Product Type:	Primary Antibodies
Applications:	IF, IHC, IP, WB
Recommended Dilution:	<b>Western blot:</b> 1/500-1/1000. <b>Immunoprecipitation:</b> 1/50-1/200. <b>Immunohistochemistry on Paraffin Sections:</b> 1/50-1/200.
Reactivity:	Human, Mouse, Rat
Host:	Rabbit
Clonality:	Polyclonal
Specificity:	This antibody detects endogenous levels of NFkB-p65 pSer536 protein.
Formulation:	Phosphate buffered saline (PBS), pH~7.2 State: Aff - Purified State: Liquid purified Ig fraction (> 95% pure by SDS-PAGE). Preservative: 0.05% Sodium Azide
Concentration:	1.0 mg/ml
Purification:	Affinity Chromatography using epitope-specific immunogen.
Conjugation:	Unconjugated
Storage:	Store undiluted at 2-8°C for one month or (in aliquots) at -20°C for longer. Avoid repeated freezing and thawing.
Stability:	Shelf life: One year from despatch.
Predicted Protein Size:	~ 60,75 kDa
Gene Name:	RELA proto-oncogene, NF-kB subunit
Database Link:	<a href="#">Entrez Gene 5970 Human Q04206</a>



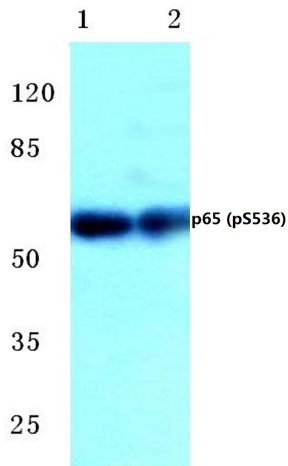
[View online »](#)

**Background:**

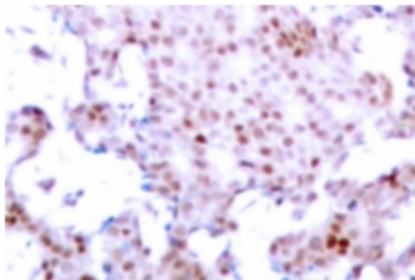
p65 is a subunit of the nuclear factor kappa B. The transcription factor NF $\kappa$ B is widely recognized as a critical mediator of immune and inflammatory responses. In most cell types, NF $\kappa$ B is found in the cytoplasm where it is associated with an inhibitory protein in many tissues. A high proportion of spontaneous NIH/3T3 transformants overexpress c-Met and by transfection analysis the c-Met proto-oncogene has been shown to exhibit transforming activity.

**Synonyms:**

NF kappa B p65, NF $\kappa$ B p65, Transcription factor p65, Rel A, NF $\kappa$ B3

**Product images:**

Western blot (WB) analysis of p-NF $\kappa$ B-p65 antibody (Cat.-No.: AP01650PU-N) at 1/500 dilution. Lane 1: HeLa cell lysate treated with UV, Lane 2: Mouse kidney tissue lysate



Immunohistochemistry (IHC) analysis of NF $\kappa$ B-p65 pSer536 Antibody (Cat.-No.: AP01650PU-N) in paraffin-embedded human breast carcinoma tissue.