

## Product datasheet for **AP01636PU-N**

### MEK6 (MAP2K6) pSer207 Rabbit Polyclonal Antibody

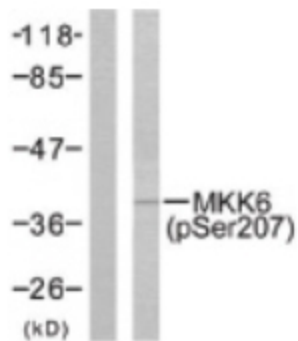
#### Product data:

Product Type:	Primary Antibodies
Applications:	ELISA, IHC, WB
Recommended Dilution:	ELISA: 1/5000-1/10000. Western Blot: 1/500-1/1000. Immunohistochemistry: 1/50-1/200.
Reactivity:	Human, Mouse
Host:	Rabbit
Clonality:	Polyclonal
Specificity:	This antibody detects endogenous levels of MKK6 pSer207 protein.
Formulation:	Phosphate buffered saline (PBS), pH~7.2 containing 15 mM Sodium Azide as preservative. State: Aff - Purified State: Liquid purified Ig fraction (> 95% pure by SDS-PAGE).
Concentration:	1.0 mg/ml
Purification:	Affinity Chromatography using epitope-specific immunogen.
Conjugation:	Unconjugated
Storage:	Store the antibody undiluted at 2-8°C for one month or (in aliquots) at -20°C for longer. Avoid repeated freezing and thawing.
Stability:	Shelf life: One year from despatch.
Gene Name:	mitogen-activated protein kinase kinase 6
Database Link:	<a href="#">Entrez Gene 5608 Human P52564</a>
Background:	Mitogen activated protein kinase kinase 6 (MEK6 or MKK6) belongs to the serine/threonine protein kinase family and the MAPK kinase subfamily (MAP2K, MKK or MEKs). MEK6, closely related to MEK3, catalyzes the concomitant phosphorylation of a threonine and a tyrosine residue in MAP kinase p38, thus activating it, in response to inflammatory cytokines and environmental stress.
Synonyms:	MAPKK 6, MAPK/ERK kinase 6, SAPKK3, MEK6, MKK6, MAP kinase kinase 6

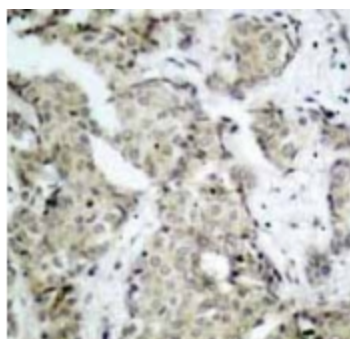


[View online »](#)

## Product images:



Western blot (WB) analysis of MKK6 pSer207 antibody in extracts from MDA-MB-435 cells treated with UV.



Immunohistochemistry (IHC) analysis of MKK6 pSer207 antibody in paraffin-embedded human breast carcinoma tissue.