

Product datasheet for **AP01627PU-M**

LIM Kinase 1 (LIMK1) pThr508 Rabbit Polyclonal Antibody

Product data:

Product Type:	Primary Antibodies
Applications:	IF, IHC, WB
Recommended Dilution:	Western Blot: 1/500-1/1000. Immunohistochemistry on paraffin sections 1/50-1/200. Immunofluorescence: 1/50-1/200.
Reactivity:	Human, Mouse, Rat
Host:	Rabbit
Clonality:	Polyclonal
Specificity:	This antibody detects endogenous levels of LIMK1 pThr508 protein.
Formulation:	Phosphate buffered saline (PBS), pH~7.2 containing 15 mM Sodium Azide as preservative. State: Aff - Purified State: Liquid purified Ig fraction (> 95% pure by SDS-PAGE).
Concentration:	1.0 mg/ml
Purification:	Affinity Chromatography using epitope-specific immunogen.
Conjugation:	Unconjugated
Storage:	Store the antibody undiluted at 2-8°C for one month or (in aliquots) at -20°C for longer. Avoid repeated freezing and thawing.
Stability:	Shelf life: One year from despatch.
Predicted Protein Size:	~ 75 kDa
Gene Name:	LIM domain kinase 1
Database Link:	Entrez Gene 3984 Human P53667



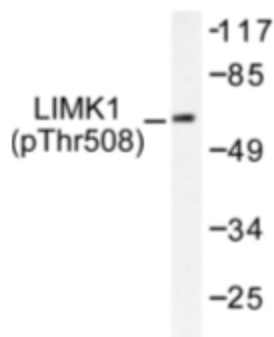
[View online »](#)

Background:

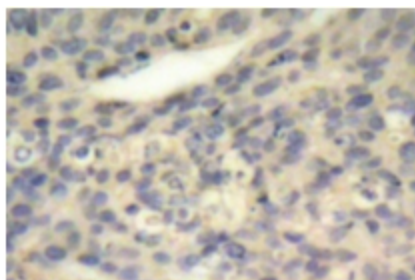
There are approximately 40 known eukaryotic LIM proteins, so named for the LIM domains they contain. LIM domains are highly conserved cysteine rich structures containing 2 zinc fingers. Although zinc fingers usually function by binding to DNA or RNA, the LIM motif probably mediates protein-protein interactions. LIM kinase 1 and LIM kinase 2 belong to a small subfamily with a unique combination of 2 N terminal LIM motifs and a C-terminal protein kinase domain. LIMK1 is likely to be a component of an intracellular signaling pathway and may be involved in brain development. LIMK1 hemizyosity is implicated in the impaired visuospatial constructive cognition of Williams syndrome. Two splice variant have been identified.

Synonyms:

LIMK, LIM domain kinase 1, LIMK-1, EC=2.7.11.1

Product images:


Western blot (WB) analysis of LIMK1 pThr508 antibody (Cat.-No.: [AP01627PU-N]) in extracts from COLO cells.



Immunohistochemistry (IHC) analysis of LIMK1 pThr508 antibody (Cat.-No.: [AP01627PU-N]) in paraffin-embedded human breast carcinoma tissue.