

Product datasheet for **AP01617PU-N**

IκB alpha (NFKBIA) pSer32/36 Rabbit Polyclonal Antibody

Product data:

Product Type:	Primary Antibodies
Applications:	IF, IHC, WB
Recommended Dilution:	Western Blot: 1/500-1/1000. Immunohistochemistry on paraffin sections 1/50-1/200. Immunofluorescence: 1/50-1/200.
Reactivity:	Human, Mouse, Rat
Host:	Rabbit
Clonality:	Polyclonal
Specificity:	This antibody detects endogenous levels of IκB-alpha pSer32/36 protein.
Formulation:	Phosphate buffered saline (PBS), pH~7.2 containing 0.05% Sodium Azide as preservative. State: Aff - Purified State: Liquid purified Ig fraction (> 95% pure by SDS-PAGE).
Concentration:	1.0 mg/ml
Purification:	Affinity Chromatography using epitope-specific immunogen.
Conjugation:	Unconjugated
Storage:	Store the antibody undiluted at 2-8°C for one month or (in aliquots) at -20°C for longer. Avoid repeated freezing and thawing.
Stability:	Shelf life: One year from despatch.
Predicted Protein Size:	~ 36 kDa
Gene Name:	NFKB inhibitor alpha
Database Link:	Entrez Gene 4792 Human P25963



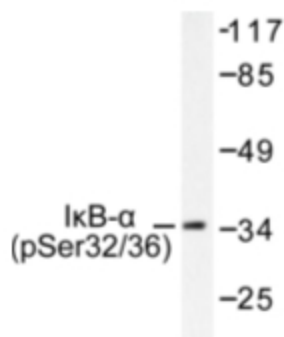
[View online »](#)

Background:

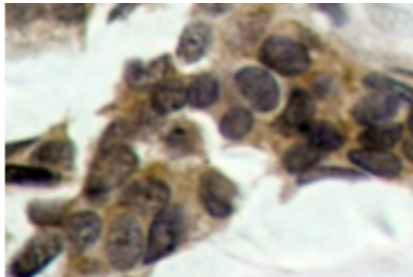
On the basis of both functional and structural considerations, members of the I κ B family of proteins can be divided into four groups. The first of these groups, I κ B- α (a 35-37 kDa protein), includes the avian protein pp40 and the mammalian MAD-3, both of which inhibit binding of p50-p65 NF κ B complex or Rel protein to their cognate binding sites but do not inhibit the binding of p50 homodimer to κ B sites, suggesting that the I κ B- α family binds to the p65 subunit of p50-p65 heterocomplex through Ankyrin repeats. The second member of the I κ B family is represented by a 45 kDa protein designated I κ B- β . The third group of I κ B proteins is represented by I κ B- γ , a 70 kDa protein identical in sequence with the C-terminal domain of the p110 precursor of NF κ B p50 and expressed predominantly in lymphoid cells. An additional I κ B family member has been identified as I κ B- ϵ , a 45 kDa protein which has several phosphorylated forms and is primarily found complexed with RelA and/or c-Rel.

Synonyms:

I-kappa-B-alpha, MAD3, NFKBI, I kappa B-alpha, IkappaBalpha, IKB-alpha

Product images:

Western blot (WB) analysis of I κ B-alpha pS32/S36 antibody (Cat.-No.: AP01617PU-N) in extracts from HeLa cells.



Immunohistochemistry (IHC) analysis of I κ B-alpha pSer32/36 antibody (Cat.-No.: AP01617PU-N) in paraffin-embedded human breast carcinoma tissue.