

Product datasheet for **AP01617PU-M**

IKB alpha (NFKBIA) pSer32/36 Rabbit Polyclonal Antibody

Product data:

Product Type:	Primary Antibodies
Applications:	IF, IHC, WB
Recommended Dilution:	Western Blot: 1/500-1/1000. Immunohistochemistry on paraffin sections 1/50-1/200. Immunofluorescence: 1/50-1/200.
Reactivity:	Human, Mouse, Rat
Host:	Rabbit
Clonality:	Polyclonal
Specificity:	This antibody detects endogenous levels of IκB-alpha pSer32/36 protein.
Formulation:	Phosphate buffered saline (PBS), pH~7.2 containing 0.05% Sodium Azide as preservative. State: Aff - Purified State: Liquid purified Ig fraction (> 95% pure by SDS-PAGE).
Concentration:	1.0 mg/ml
Purification:	Affinity Chromatography using epitope-specific immunogen.
Conjugation:	Unconjugated
Storage:	Store the antibody undiluted at 2-8°C for one month or (in aliquots) at -20°C for longer. Avoid repeated freezing and thawing.
Stability:	Shelf life: One year from despatch.
Predicted Protein Size:	~ 36 kDa
Gene Name:	NFKB inhibitor alpha
Database Link:	Entrez Gene 4792 Human P25963



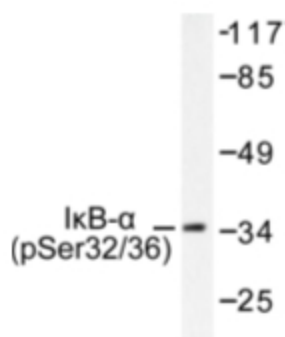
[View online »](#)

Background:

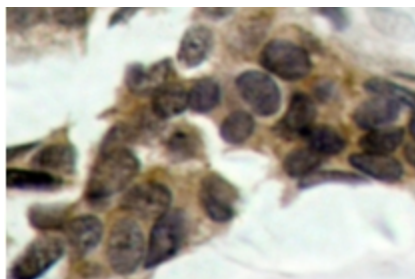
On the basis of both functional and structural considerations, members of the IκB family of proteins can be divided into four groups. The first of these groups, IκB-α (a 35-37 kDa protein), includes the avian protein pp40 and the mammalian MAD-3, both of which inhibit binding of p50-p65 NFκB complex or Rel protein to their cognate binding sites but do not inhibit the binding of p50 homodimer to κB sites, suggesting that the IκB-α family binds to the p65 subunit of p50-p65 heterocomplex through Ankyrin repeats. The second member of the IκB family is represented by a 45 kDa protein designated IκB-β. The third group of IκB proteins is represented by IκB-γ, a 70 kDa protein identical in sequence with the C-terminal domain of the p110 precursor of NFκB p50 and expressed predominantly in lymphoid cells. An additional IκB family member has been identified as IκB-ε, a 45 kDa protein which has several phosphorylated forms and is primarily found complexed with RelA and/or c-Rel.

Synonyms:

I-kappa-B-alpha, MAD3, NFKBI, I kappa B-alpha, IkappaBalphabetalpha, IκB-alpha

Product images:


Western blot (WB) analysis of IκB-alpha pS32/S36 antibody (Cat.-No.: [AP01617PU-N]) in extracts from HeLa cells.



Immunohistochemistry (IHC) analysis of IκB-alpha pSer32/36 antibody (Cat.-No.: [AP01617PU-N]) in paraffin-embedded human breast carcinoma tissue.