

Product datasheet for **AP01612PU-S**

IKK alpha (CHUK) pThr23 Rabbit Polyclonal Antibody

Product data:

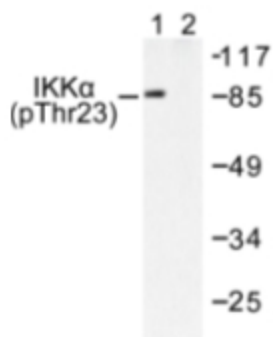
Product Type:	Primary Antibodies
Applications:	IHC, WB
Recommended Dilution:	ELISA: 1/5000-1/10000. Western Blot: 1/500-1/1000. Immunohistochemistry: 1/50-1/200.
Reactivity:	Human, Mouse, Rat
Host:	Rabbit
Clonality:	Polyclonal
Specificity:	This antibody detects endogenous levels of IKK-alpha pThr23 protein.
Formulation:	Phosphate buffered saline (PBS), pH~7.2 containing 15 mM Sodium Azide as preservative. State: Aff - Purified State: Liquid purified Ig fraction (> 95% pure by SDS-PAGE).
Concentration:	1.0 mg/ml
Purification:	Affinity Chromatography using epitope-specific immunogen.
Conjugation:	Unconjugated
Storage:	Store the antibody undiluted at 2-8°C for one month or (in aliquots) at -20°C for longer. Avoid repeated freezing and thawing.
Stability:	Shelf life: One year from despatch.
Gene Name:	conserved helix-loop-helix ubiquitous kinase
Database Link:	Entrez Gene 1147 Human O15111
Background:	Nuclear factor kappa B (NFkB) is a ubiquitous transcription factor and an essential mediator of gene expression during activation of immune and inflammatory responses. NFkB mediates the expression of a great variety of genes in response to extracellular stimuli including IL1, TNF alpha, and bacterial product LPS. NFkB is associated with Ikb proteins in the cell cytoplasm, which inhibit NFkB activity. IKK is a serine protein kinase, and the IKK complex contains alpha and beta subunits (IKK alpha and IKK beta). IKK alpha and IKK beta interact with each other and both are essential for NFkB activation. IKK alpha specifically phosphorylates Ikb α . IKK α is expressed in variety of human tissues.



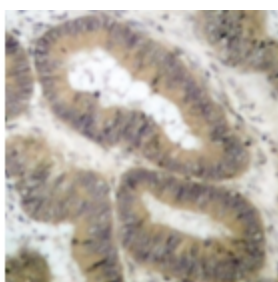
[View online »](#)

Synonyms: CHUK, TCF16, I kappa-B kinase alpha, IkbKA, IKK-alpha, IKK-A, IkappaB kinase, I-kappa-B kinase 1, NFKBIKA, IKK1

Product images:



Western blot (WB) analysis of IKK-alpha pThr23 antibody in extracts from MDA-MB-435 cells treated with EGF.



Immunohistochemistry (IHC) analysis of IKK-alpha pThr23 antibody in paraffin-embedded human colon carcinoma tissue.