

Product datasheet for **AP01611PU-N**

IGF1 Receptor (IGF1R) pTyr1165/1166 Rabbit Polyclonal Antibody

Product data:

Product Type:	Primary Antibodies
Applications:	WB
Recommended Dilution:	Western Blot: 1/500-1/1000.
Reactivity:	Human, Mouse, Rat
Host:	Rabbit
Clonality:	Polyclonal
Specificity:	This antibody detects endogenous levels of IGF-1R pTyr1165/1166 protein.
Formulation:	Phosphate buffered saline (PBS), pH~7.2 containing 0.05% Sodium Azide as preservative. State: Aff - Purified State: Liquid purified Ig fraction (> 95% pure by SDS-PAGE).
Concentration:	1.0 mg/ml
Purification:	Affinity Chromatography using epitope-specific immunogen.
Conjugation:	Unconjugated
Storage:	Store the antibody undiluted at 2-8°C for one month or (in aliquots) at -20°C for longer. Avoid repeated freezing and thawing.
Stability:	Shelf life: One year from despatch.
Predicted Protein Size:	~ 90,155 kDa
Gene Name:	insulin like growth factor 1 receptor
Database Link:	Entrez Gene 3480 Human P08069



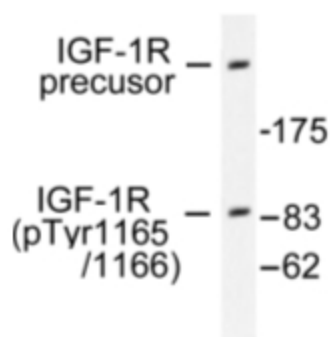
[View online »](#)

Background:

Insulin-like growth factor I, or IGF-I, is an ubiquitous peptide that acts in both an autocrine and paracrine fashion to stimulate the growth of vascular smooth muscle cells. In addition, IGF-I regulates renal function, growth and repair, is critically involved in bone formation and resorption and has been implicated in mediating aspects of the immune response. IGF function is modulated by at least six circulating IGF-binding proteins, designated IGFBP1-6, which associate with the soluble growth factor. While the function of IGF-II is less well understood, overexpression of the protein in mice suggests that IGF-II may play a regulatory role in insulin sensitivity and glucose uptake. Both IGF-I and IGF-II exert their biological effects through a common receptor, designated IGF-IR. Like the insulin receptor, IGF-IR is composed of two extracellular α chains and two signal transducing β chains cross-linked by disulfide bonds.

Synonyms:

IGF-I receptor, IGF1 Receptor

Product images:


Western blot (WB) analysis of IGF-1R pTyr1165/1166 antibody (Cat.-No.: AP01611PU-N) in extracts from 293 cells treated with Insulin.