

## Product datasheet for **AP01610PU-M**

### IGF1 Receptor (IGF1R) pTyr1161 Rabbit Polyclonal Antibody

#### Product data:

Product Type:	Primary Antibodies
Applications:	ELISA, IHC, IP, WB
Recommended Dilution:	<b>Peptide ELISA:</b> 1/20000-1/40000. <b>Western Blot:</b> 1/500-1/1000. <b>Immunohistochemistry:</b> 1/50-1/200. <b>Immunoprecipitation:</b> 1/50-1/200.
Reactivity:	Human, Mouse, Rat
Host:	Rabbit
Clonality:	Polyclonal
Immunogen:	Synthetic phosphopeptide derived from human IGF-1R around the phosphorylation site of Tyrosine 1161.
Specificity:	This antibody detects endogenous levels of IGF-1R pTyr1161 protein.
Formulation:	Phosphate buffered saline (PBS), pH~7.2 containing 15 mM Sodium Azide as preservative. State: Aff - Purified State: Liquid purified Ig fraction (> 95% pure by SDS-PAGE).
Concentration:	1.0 mg/ml
Purification:	Affinity Chromatography using epitope-specific immunogen.
Conjugation:	Unconjugated
Storage:	Store the antibody undiluted at 2-8°C for one month or (in aliquots) at -20°C for longer. Avoid repeated freezing and thawing.
Stability:	Shelf life: One year from despatch.
Predicted Protein Size:	~ 95, 155 kDa
Gene Name:	insulin like growth factor 1 receptor
Database Link:	<a href="#">Entrez Gene 3480 Human P08069</a>



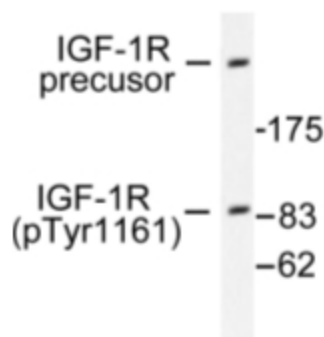
[View online »](#)

**Background:**

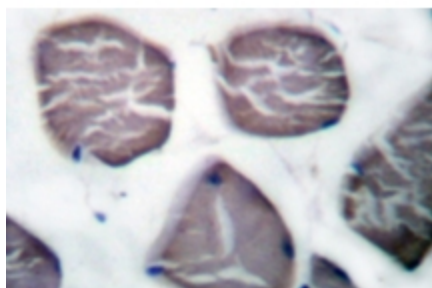
There are two kinds of IGF receptors based on their relative affinities for IGF1 versus IGF2. The IGF1 receptor prefers IGF1 over IGF2 and weakly binds insulin. IGF1 receptor is a disulfide-linked heterotetrameric transmembrane protein consisting of two alpha (130 kD) and two beta (95 kD) subunits. Both the alpha and beta subunits are encoded within a single receptor precursor cDNA. The IGF1 receptor is therefore similar in structure to the insulin receptor. The proreceptor polypeptide is proteolytically cleaved and disulfide-linked to yield the mature heterotetrameric receptor. The IGF1 receptor is highly expressed in all cell types and tissues and is highly overexpressed in most malignant tissues where it functions as an anti-apoptotic agent by enhancing cell survival.

**Synonyms:**

IGF-I receptor, IGF1 Receptor

**Product images:**


Western blot (WB) analysis of IGF-1R pTyr1161 antibody in extracts from 293 cells treated with Insulin.



Immunohistochemistry (IHC) analysis of IGF-1R pTyr1161 antibody in paraffin-embedded human breast carcinoma tissue.