

## Product datasheet for **AP01603PU-M**

### Her2 (ERBB2) pTyr877 Rabbit Polyclonal Antibody

#### Product data:

Product Type:	Primary Antibodies
Applications:	ELISA, IHC, IP, WB
Recommended Dilution:	<b>Western blot:</b> 1/500-1/1000. <b>Immunohistochemistry on paraffin sections</b> 1/50-1/200. <b>Immunoprecipitation:</b> 1/50-1/200.
Reactivity:	Human, Mouse, Rat
Host:	Rabbit
Clonality:	Polyclonal
Specificity:	This antibody detects endogenous levels of HER2 protein. (region surrounding Tyr877)
Formulation:	Phosphate buffered saline (PBS), pH~7.2 State: Aff - Purified State: Liquid purified Ig fraction (> 95% pure by SDS-PAGE). Preservative: 0.05% Sodium Azide
Concentration:	1.0 mg/ml
Purification:	Affinity Chromatography using epitope-specific immunogen.
Conjugation:	Unconjugated
Storage:	Store undiluted at 2-8°C for one month or (in aliquots) at -20°C for longer. Avoid repeated freezing and thawing.
Stability:	Shelf life: One year from despatch.
Predicted Protein Size:	~ 138, 185 kDa
Gene Name:	erb-b2 receptor tyrosine kinase 2
Database Link:	<a href="#">Entrez Gene 2064 Human P04626</a>



[View online »](#)

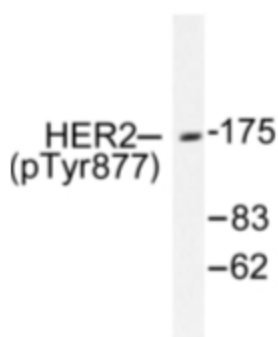
## Background:

The EGF receptor family comprises several related receptor tyrosine kinases that are frequently overexpressed in a variety of carcinomas. Members of this receptor family include EGFR (HER1), Neu (ErbB-2, HER2), ErbB-3 (HER3), and ErbB-4 (HER4), which form either homodimers or heterodimers upon ligand binding. Neu, a 185 kDa glycoprotein, undergoes transactivation upon heterodimerization with other EGF receptor family members. Neu heterodimerization with ErbB-3 recruits heregulin, which induces phosphoinositide (PI) 3-kinase activation. Activation of Neu potentiates tumor cell motility and protease secretion and invasion, and also modulates cell cycle checkpoint function, DNA repair and apoptotic responses. Amplification and/or overexpression of Neu occurs in 20-30% of breast carcinomas. Measurement of increased Neu expression can be a predictor of disease prognosis. Neu may also prove to be a promising target for therapeutic agents.

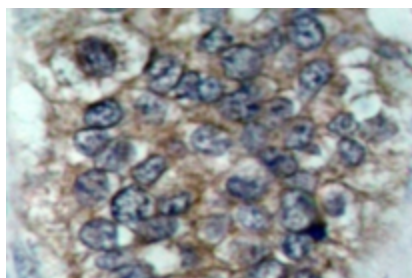
## Synonyms:

HER-2, NEU, p185erbB2, NGL, c-erbB-2, MNL19

## Product images:



Western blot (WB) analysis of HER2 antibody (Cat.-No.: [AP01603PU-N]) in extracts from MDA-MB-231 cells treated with EGF.



Immunohistochemistry (IHC) analysis of HER2 antibody (Cat.-No.: [AP01603PU-N]) in paraffin-embedded human breast carcinoma tissue.