

Product datasheet for **AP01600PU-N**

Her2 (ERBB2) pTyr1221/1222 Rabbit Polyclonal Antibody

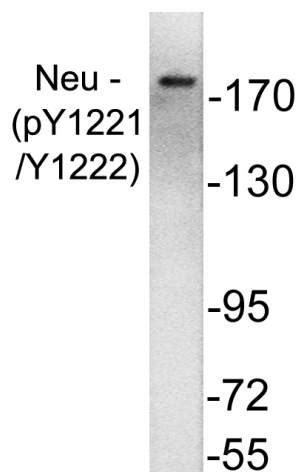
Product data:

Product Type:	Primary Antibodies
Applications:	IHC, IP, WB
Recommended Dilution:	Western Blot: 1/500-1/1000. Immunohistochemistry on paraffin sections 1/50-1/200. Immunoprecipitation: 1/50-1/200.
Reactivity:	Human, Mouse, Rat
Host:	Rabbit
Clonality:	Polyclonal
Specificity:	This antibody detects endogenous levels of HER2 pTyr1221/1222 protein.
Formulation:	Phosphate buffered saline (PBS), pH~7.2 containing 0.05% Sodium Azide as preservative. State: Aff - Purified State: Liquid purified Ig fraction (> 95% pure by SDS-PAGE).
Concentration:	1.0 mg/ml
Purification:	Affinity Chromatography using epitope-specific immunogen.
Conjugation:	Unconjugated
Storage:	Store the antibody undiluted at 2-8°C for one month or (in aliquots) at -20°C for longer. Avoid repeated freezing and thawing.
Stability:	Shelf life: One year from despatch.
Predicted Protein Size:	~ 150-170 kDa
Gene Name:	erb-b2 receptor tyrosine kinase 2
Database Link:	Entrez Gene 2064 Human P04626
Background:	ErbB 2 is a receptor tyrosine kinase of the ErbB 2 family. It is closely related in structure to the epidermal growth factor receptor. ErbB 2 oncoprotein is detectable in a proportion of breast and other adenocarcinomas, as well as transitional cell carcinomas. In the case of breast cancer, expression determined by immunohistochemistry has been shown to be associated with poor prognosis.
Synonyms:	HER-2, NEU, p185erbB2, NGL, c-erbB-2, MNL19

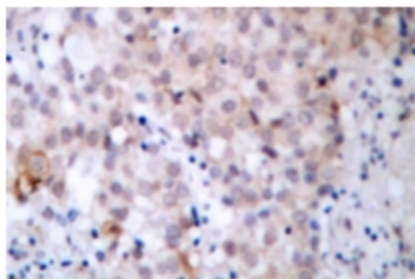


[View online »](#)

Product images:



Western blot (WB) analysis of p-HER2 (Y1221 +Y1222) antibody (Cat.-No.: AP01600PU-N) in extracts from SK-OV3 cells treated with EGF.



Immunohistochemistry (IHC) analysis of HER2 pTyr1221+pTyr1222 antibody (Cat.-No.: AP01600PU-N) in paraffin-embedded human breast carcinoma tissue.