

Product datasheet for **AP01589PU-N**

G3BP (G3BP1) pSer232 Rabbit Polyclonal Antibody

Product data:

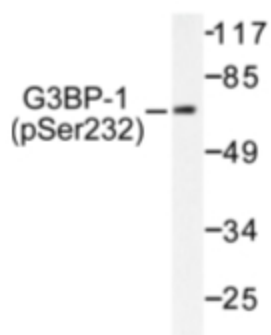
Product Type:	Primary Antibodies
Applications:	IHC, WB
Recommended Dilution:	Western Blot: 1/500-1/1000. Immunohistochemistry on paraffin sections 1/50-1/200.
Reactivity:	Human, Mouse
Host:	Rabbit
Clonality:	Polyclonal
Specificity:	This antibody detects endogenous levels of G3BP-1 pSer232 protein.
Formulation:	Phosphate buffered saline (PBS), pH~7.2 containing 0.05% Sodium Azide as preservative. State: Aff - Purified State: Liquid purified Ig fraction (> 95% pure by SDS-PAGE).
Concentration:	1.0 mg/ml
Purification:	Affinity Chromatography using epitope-specific immunogen.
Conjugation:	Unconjugated
Storage:	Store the antibody undiluted at 2-8°C for one month or (in aliquots) at -20°C for longer. Avoid repeated freezing and thawing.
Stability:	Shelf life: One year from despatch.
Predicted Protein Size:	~ 52 kDa
Gene Name:	G3BP stress granule assembly factor 1
Database Link:	Entrez Gene 10146 Human Q13283
Background:	G3BP is one of the DNA-unwinding enzymes which prefers partially unwound 3'-tailed substrates and can also unwind partial RNA/DNA and RNA/RNA duplexes in an ATP-dependent fashion. This enzyme is a member of the heterogeneous nuclear RNA-binding proteins and is also an element of the Ras signal transduction pathway. It binds specifically to the Ras-GTPase-activating protein by associating with its SH3 domain. Several alternatively spliced transcript variants of this gene have been described, but the full-length nature of some of these variants has not been determined.



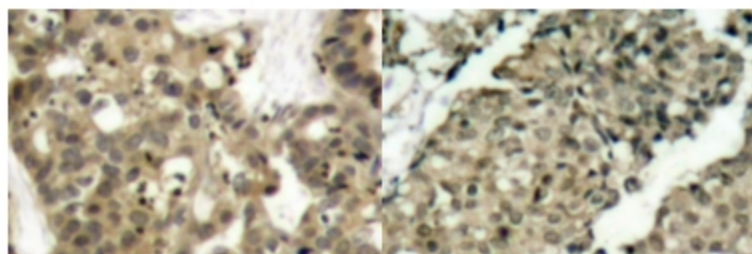
[View online »](#)

Synonyms: G3BP-1, hDH VIII

Product images:



Western blot (WB) analysis of G3BP-1 pSer232 antibody Cat.-No.: AP01589PU-N in extracts from COS7 cells.



Immunohistochemistry (IHC) analysis of G3BP-1 pSer232 antibody Cat.-No.: AP01589PU-N in paraffin-embedded human breast carcinoma tissue.