

## Product datasheet for **AP01583PU-M**

### Estrogen Receptor 1 (ESR1) pSer118 Rabbit Polyclonal Antibody

#### Product data:

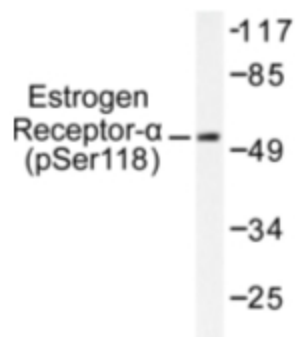
Product Type:	Primary Antibodies
Applications:	ELISA, IHC, WB
Recommended Dilution:	ELISA: 1/20000-1/40000. Western Blot: 1/500-1/1000. Immunohistochemistry: 1/50-1/200.
Reactivity:	Human, Mouse
Host:	Rabbit
Clonality:	Polyclonal
Specificity:	This antibody detects endogenous levels of Estrogen Receptor-alpha pSer118 protein.
Formulation:	Phosphate buffered saline (PBS), pH~7.2 containing 15 mM Sodium Azide as preservative. State: Aff - Purified State: Liquid purified Ig fraction (> 95% pure by SDS-PAGE).
Concentration:	1.0 mg/ml
Purification:	Affinity Chromatography using epitope-specific immunogen.
Conjugation:	Unconjugated
Storage:	Store the antibody undiluted at 2-8°C for one month or (in aliquots) at -20°C for longer. Avoid repeated freezing and thawing.
Stability:	Shelf life: One year from despatch.
Gene Name:	estrogen receptor 1
Database Link:	<a href="#">Entrez Gene 2099 Human P03372</a>
Background:	The estrogen receptor (ER) is a 66 kDa protein that mediates the actions of estrogens in estrogen responsive tissues. It is a member of a large superfamily of nuclear hormone receptors that function as ligand activated transcription factors. The ER gene consists of more than 140 kb of genomic DNA divided into 8 exons. These translate into a protein with six functionally discrete domains, labeled A through F. A second form of the estrogen receptor, ER beta has recently been described. The ER is an important regulator of growth and differentiation in the mammary gland. Presence of ER in breast tumors indicates an increased likelihood of response to anti estrogen (e.g. tamoxifen) therapy.



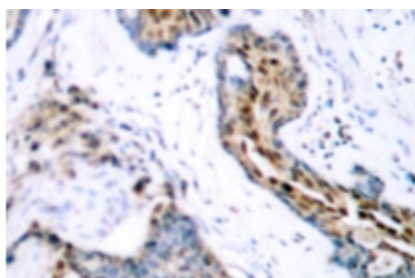
[View online »](#)

**Synonyms:** ER alpha, Estradiol receptor, ESR1, ESR, NR3A1

## Product images:



Western blot (WB) analysis of Estrogen Receptor-alpha pSer118 antibody in extracts from MCF7 cells treated with Estradiol.



Immunohistochemistry (IHC) analysis of Estrogen Receptor-alpha pSer118 antibody in paraffin-embedded human breast carcinoma tissue.