

Product datasheet for **AP01582PU-M**

Estrogen Receptor 1 (ESR1) pSer106 Rabbit Polyclonal Antibody

Product data:

Product Type:	Primary Antibodies
Applications:	ELISA, IHC, WB
Recommended Dilution:	ELISA: 1/5000-1/10000. Western Blot: 1/500-1/1000. Immunohistochemistry: 1/50-1/200.
Reactivity:	Human, Mouse, Rat
Host:	Rabbit
Clonality:	Polyclonal
Specificity:	This antibody detects endogenous levels of Estrogen Receptor-alpha pSer106 protein.
Formulation:	Phosphate buffered saline (PBS), pH~7.2 containing 15 mM Sodium Azide as preservative. State: Aff - Purified State: Liquid purified Ig fraction (> 95% pure by SDS-PAGE).
Concentration:	1.0 mg/ml
Purification:	Affinity Chromatography using epitope-specific immunogen.
Conjugation:	Unconjugated
Storage:	Store the antibody undiluted at 2-8°C for one month or (in aliquots) at -20°C for longer. Avoid repeated freezing and thawing.
Stability:	Shelf life: One year from despatch.
Gene Name:	estrogen receptor 1
Database Link:	Entrez Gene 2099 Human P03372



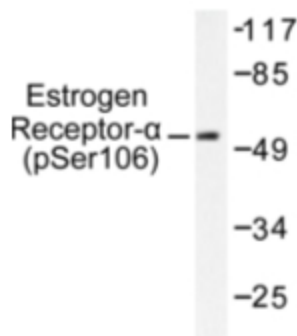
[View online »](#)

Background:

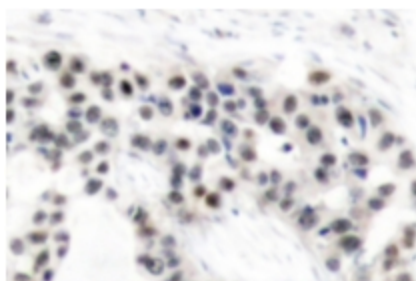
Estrogen receptor α (ER α , ER, ESR, ESRA, Era, NR3A1, estrogen receptor 1) is a ligand-activated transcription factor composed of several domains important for hormone binding, DNA binding and activation of transcription. Alternative splicing results in several ER α mRNA transcripts, which differ primarily in their 5' untranslated regions. ER α undergoes phosphorylation in response to estradiol binding. Human ER α is predominately phosphorylated on Ser 118 and to a lesser extent on Ser 104 and Ser 106. In response to activation of the mitogen-activated protein kinase pathway, phosphorylation occurs on Ser 118 and Ser 167. These Serine residues are all located within the activation function 1 region of the N-terminal domain of ER α . In contrast, activation of protein kinase A increases the phosphorylation of Ser 236, which is located in the DNA-binding domain. Src kinase-dependent Tyr 537 phosphorylation may enhance estrogen binding to ER α . Mutation of Tyr 537 of the human ER α produces receptors having a range of constitutive activity.

Synonyms:

ER alpha, Estradiol receptor, ESR1, ESR, NR3A1

Product images:


Western blot (WB) analysis of Estrogen Receptor-alpha pSer106 antibody in extracts from MCF7 cells.



Immunohistochemistry (IHC) analysis of Estrogen Receptor-alpha pSer106 antibody in paraffin-embedded human breast carcinoma tissue.