

Product datasheet for **AP01577PU-M**

ELK1 pSer383 Rabbit Polyclonal Antibody

Product data:

Product Type:	Primary Antibodies
Applications:	ELISA, IHC, IP, WB
Recommended Dilution:	ELISA: 1:20000~1:40000. Western Blot: 1:500~1:1000. Immunohistochemistry: 1:50~1:200. Immunoprecipitation: 1:50~1:200.
Reactivity:	Human, Mouse
Host:	Rabbit
Clonality:	Polyclonal
Specificity:	p-Elk1 (pSer383) antibody detects endogenous levels of p-Elk1 protein.
Formulation:	Phosphate buffered saline (PBS) with 15 mM sodium azide, approx. pH 7.2. State: Aff - Purified State: Liquid purified Ig
Concentration:	1,0 mg/ml
Purification:	Affinity chromatography
Conjugation:	Unconjugated
Storage:	Store the antibody undiluted at 2-8°C for one month or (in aliquots) at -20°C for longer. Avoid repeated freezing and thawing.
Stability:	Shelf life: one year from despatch.
Gene Name:	ELK1, ETS transcription factor
Database Link:	Entrez Gene 2002 Human P19419



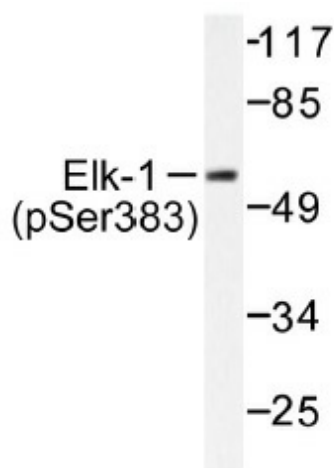
[View online »](#)

Background:

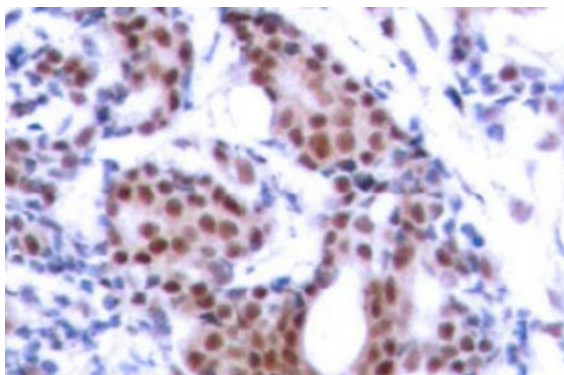
Ets-1 is the prototype member of a family of genes identified on the basis of homology to the v-Ets oncogene isolated from the E26 erythroblastosis virus. This family of genes currently includes Ets-1, Ets-2, Erg-1-3, Elk-1, Elf-1, Elf-5, NERF, PU.1, PEA3, ERM, FEV, ER8I, Fli-1, TEL, Spi-B, ESE-1, ESE-3A, Net, ABT1 and ERF. Members of the Ets gene family exhibit varied patterns of tissue expression, and share a highly conserved carboxy terminal domain containing a sequence related to the SV40 large T antigen nuclear localization signal sequence. This conserved domain is essential for Ets-1 binding to DNA and is likely to be responsible for the DNA binding activity of all members of the Ets gene family. Several of these proteins have been shown to recognize similar motifs in DNA that share a centrally located 5'-GGAA-3' element.

Synonyms:

Elk-1

Product images:


Western blot (WB) analysis of p-Elk1 (pSer383) antibody in extracts from HeLa cells treated with UV.



Immunohistochemistry (IHC) analysis of p-Elk1 (pSer383) antibody in paraffin-embedded human breast carcinoma tissue