

## Product datasheet for **AP01548PU-M**

### CDC25C pSer216 Rabbit Polyclonal Antibody

#### Product data:

Product Type:	Primary Antibodies
Applications:	IHC, WB
Recommended Dilution:	<b>Western Blot:</b> 1/500-1/1000. <b>Immunohistochemistry on paraffin sections:</b> 1/50-1/200.
Reactivity:	Human
Host:	Rabbit
Clonality:	Polyclonal
Specificity:	p-CDC25C (pSer216) antibody detects endogenous levels of p-CDC25C protein.
Formulation:	Phosphate buffered saline (PBS) with 0.05% sodium azide, approx. pH 7.2. State: Aff - Purified State: Liquid purified Ig fraction
Concentration:	1.0 mg/ml
Purification:	Affinity chromatography
Conjugation:	Unconjugated
Storage:	Store the antibody undiluted at 2-8°C for one month or (in aliquots) at -20°C for longer. Avoid repeated freezing and thawing.
Stability:	Shelf life: one year from despatch.
Predicted Protein Size:	~ 53 kDa
Gene Name:	cell division cycle 25C
Database Link:	<a href="#">Entrez Gene 995 Human P30307</a>

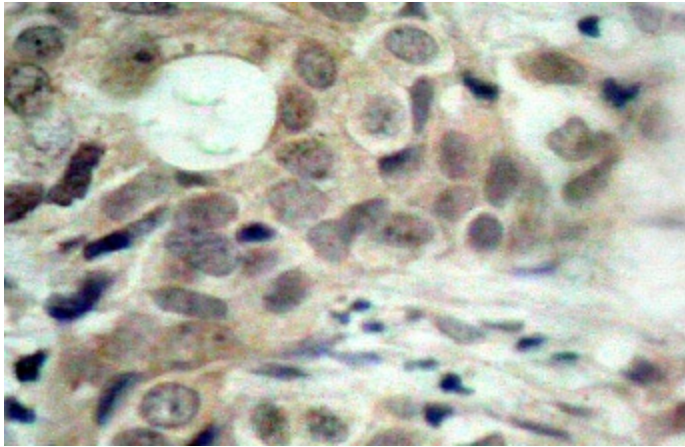
[View online »](#)

**Background:**

Cell cycle events are regulated by the sequential activation and deactivation of cyclin-dependent kinases (Cdks), including Cdk2 and Cdc2. Cdk2, in complexes with cyclin E and cyclin A, appears necessary for the onset and progression of DNA replication, while the Cdc2 kinase, in complexes with cyclin A or cyclin B, is required for the initiation of cell division. Wee 1 has been identified as a protein kinase that suppresses the entry into mitosis by mediating inhibiting tyrosine phosphorylation of Cdc2 p34. In contrast, members of the Cdc25 family of protein phosphatases function as mitotic activators by dephosphorylation of Cdc2 p34 on regulatory tyrosine and possibly threonine residues. The Cdc25 gene family consists of at least three members that share approximately 40% identity in their most conserved carboxy-terminal sequences.

**Synonyms:**

CDC25

**Product images:**


Immunohistochemistry (IHC) analysis of p-CDC25C (pSer216) antibody Cat.-No.: [AP01548PU-N] in paraffin-embedded human breast carcinoma tissue.