

Product datasheet for **AP01538PU-N**

Bcl-2-like 1 (Bcl-xL, pSer62) Rabbit Polyclonal Antibody

Product data:

Product Type:	Primary Antibodies
Applications:	ELISA, IHC, WB
Recommended Dilution:	ELISA: 1:10000~1:20000. WB: 1:500~1:1000. IHC: 1:50~1:200.
Reactivity:	Human, Mouse, Rat
Host:	Rabbit
Clonality:	Polyclonal
Specificity:	p-BCL-XL (pSer62) antibody detects endogenous levels of BCL-XL protein.
Formulation:	Phosphate buffered saline (PBS), pH 7.2 with 0.02% Sodium Azide, 50% Glycerol
Concentration:	1,0 mg/ml
Purification:	Affinity chromatography
Conjugation:	Unconjugated
Storage:	Store the antibody undiluted at 2-8°C for one month or (in aliquots) at -20°C for longer. Avoid repeated freezing and thawing.
Stability:	Shelf life: one year from despatch.
Gene Name:	BCL2 like 1
Database Link:	Entrez Gene 598 Human Q07817



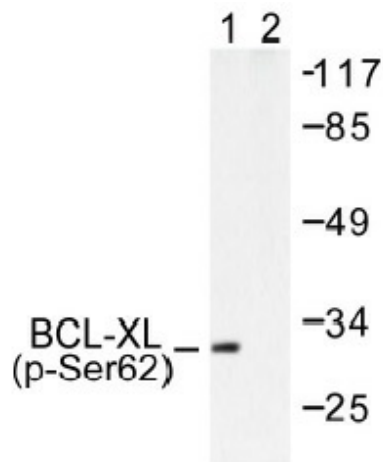
[View online »](#)

Background:

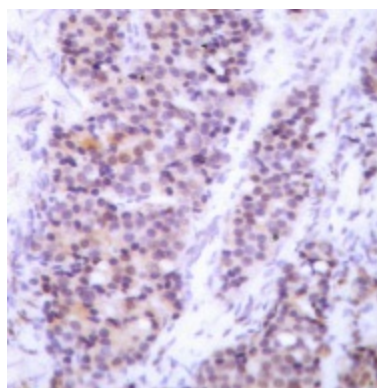
The Bcl-2 gene was isolated at the chromosomal breakpoint of t(14;18) bearing follicular B cell lymphomas. Bcl-2 blocks cell death following a variety of stimuli and confers a death-sparing effect to certain hematopoietic cell lines following growth factor withdrawal. A second protein, designated Bcl-associated X protein (Bax) p21, has extensive amino acid homology with Bcl-2 and both homodimerizes and heterodimerizes with Bcl-2. Overexpression of Bax accelerates apoptotic death induced by cytokine deprivation in an IL-3-dependent cell line, and Bax also counters the death repressor activity of Bcl-2. Bcl-x, one of several additional proteins with sequence homology to Bcl-2, is expressed as Bcl-xL, a 233 amino acid protein with 43% sequence identity with Bcl-2 that suppresses cell death, and Bcl-xS, a shorter variant that is 178 amino acids in length and lacks a 63 amino acid region (amino acids 126-188) found in Bcl-xL and which functions as a dominant inhibitor of Bcl-2. A further apoptosis-inducing protein, Bad, dimerizes both with Bcl-xL and to a lesser extent with Bcl-2, thus displacing Bax and inducing apoptosis.

Synonyms:

Bcl2-L-1, BCL2L1, BCL2L, BCLX, Bcl-x, bcl-xL, bcl-xS, Bcl-2-like protein 1

Product images:


Western blot (WB) analysis of p-BCL-XL (pSer62) antibody in extracts from 293 cells treated with UV.



Immunohistochemistry (IHC) analysis of p-BCL-XL (pSer62) antibody in paraffin-embedded human breast carcinoma tissue.