

Product datasheet for **AP01537PU-M**

BCL2 pThr56 Rabbit Polyclonal Antibody

Product data:

Product Type:	Primary Antibodies
Applications:	IF, IHC, IP, WB
Recommended Dilution:	Western Blot: 1/500-1/200. Immunoprecipitation: 1/50-1/200. Immunohistochemistry on Paraffin Sections: 1/50-1/200. Immunofluorescence: 1/50-1/200.
Reactivity:	Human
Host:	Rabbit
Clonality:	Polyclonal
Specificity:	This antibody detects endogenous levels of BCL-2 protein only when phosphorylated at Thr56.
Formulation:	Phosphate Buffered Saline (PBS), pH~7.2 with 0.05% Sodium Azide as preservative. State: Aff - Purified State: Liquid purified Ig fraction is (> 95% pure by SDS-PAGE).
Concentration:	1.0 mg/ml
Purification:	Affinity Chromatography using epitope-specific immunogen.
Conjugation:	Unconjugated
Storage:	Store the antibody undiluted at 2-8°C for one month or (in aliquots) at -20°C for longer. Avoid repeated freezing and thawing.
Stability:	Shelf life: one year from despatch.
Predicted Protein Size:	~26 kDa
Gene Name:	B-cell CLL/lymphoma 2
Database Link:	Entrez Gene 596 Human P10415

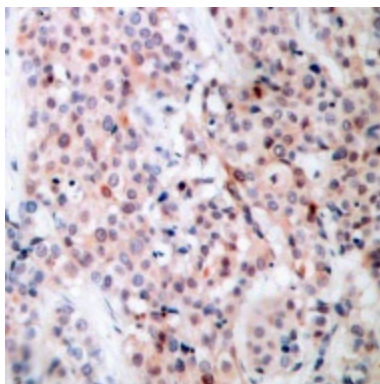


[View online »](#)

Background: Bcl2 is an integral outer mitochondrial membrane protein that blocks the apoptotic death of some cells such as lymphocytes. Constitutive expression of Bcl2, such as in the case of translocation of Bcl2 to Ig heavy chain locus, is thought to be the cause of follicular lymphoma. Two transcript variants, produced by alternate splicing, differ in their C terminal ends.

Synonyms: BCL2, Bcl-2 alpha

Product images:



Immunohistochemistry (IHC) analysis of p-BCL-2 (pThr56) antibody Cat.-No.: [AP01537PU-N] in paraffin-embedded human breast carcinoma tissue.