

Product datasheet for **AP01536PU-N**

BCL2 pSer70 Rabbit Polyclonal Antibody

Product data:

| | |
|-------------------------|---|
| Product Type: | Primary Antibodies |
| Applications: | IHC, IP, WB |
| Recommended Dilution: | Western BLOT: 1/500-1/1000. Immunoprecipitation: 1/50-1/200. Immunohistochemistry on Paraffin Sections: 1/50-1/200. |
| Reactivity: | Human, Rat |
| Host: | Rabbit |
| Clonality: | Polyclonal |
| Immunogen: | Synthetic phosphopeptide derived from human Bcl-2 around the phosphorylation site of Serine 70. |
| Specificity: | This antibody detects endogenous levels of BCL-2 protein only when phosphorylated at Ser70. |
| Formulation: | Phosphate buffered saline (PBS), pH~7.2 State: Aff - Purified State: Liquid purified Ig fraction (> 95% pure by SDS-PAGE) Preservative: 0.05% Sodium Azide |
| Concentration: | 1.0 mg/ml |
| Purification: | Affinity Chromatography using epitope-specific immunogen |
| Conjugation: | Unconjugated |
| Storage: | Store undiluted at 2-8°C for one month or (in aliquots) at -20°C for longer. Avoid repeated freezing and thawing. |
| Stability: | Shelf life: one year from despatch. |
| Predicted Protein Size: | ~26 kDa |
| Gene Name: | B-cell CLL/lymphoma 2 |
| Database Link: | Entrez Gene 596 Human P10415 |



[View online »](#)

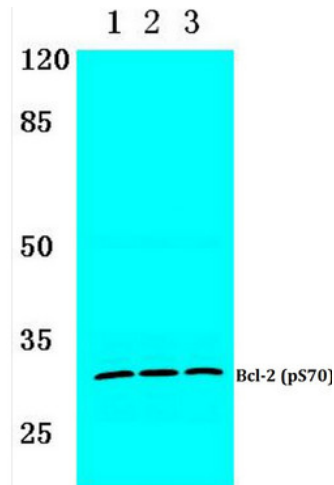
Background:

Bcl2 is an integral outer mitochondrial membrane protein that blocks the apoptotic death of some cells such as lymphocytes. Constitutive expression of Bcl2, such as in the case of translocation of Bcl2 to Ig heavy chain locus, is thought to be the cause of follicular lymphoma. Two transcript variants, produced by alternate splicing, differ in their C terminal ends.

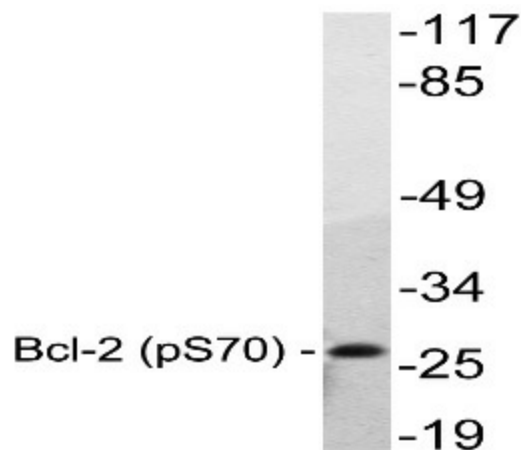
Synonyms:

BCL2, Bcl-2 alpha

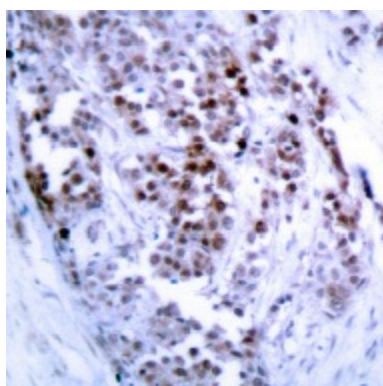
Product images:



Western blot (WB) analysis of p-Bcl-2 Antibody (pSer70) at 1/500 dilution. Lane 1: HeLa cell lysate treated with colchicine. Lane 2: Raw264.7 cell lysate treated with colchicine. Lane 3: PC12 cell lysate treated with colchicine.



Western blot (WB) analysis of p-BCL-2 Antibody.



Immunohistochemistry analysis of p-BCL-2 (pSer70) Antibody in paraffin-embedded human breast carcinoma tissue.