

## Product datasheet for **AP01535PU-M**

### **BAD pSer155/118 Rabbit Polyclonal Antibody**

#### **Product data:**

Product Type:	Primary Antibodies
Applications:	ELISA, IHC, WB
Recommended Dilution:	ELISA: 1:10000~1:20000. WB: 1:500~1:1000. IHC: 1:50~1:200.
Reactivity:	Human, Mouse, Rat
Host:	Rabbit
Clonality:	Polyclonal
Specificity:	p-BAD (pSer155) antibody detects endogenous levels of p-BAD protein.
Formulation:	Phosphate buffered saline (PBS) with 15 mM sodium azide, approx. pH 7.2. State: Aff - Purified State: Liquid purified Ig
Concentration:	1,0 mg/ml
Purification:	Affinity chromatography
Conjugation:	Unconjugated
Storage:	Store the antibody undiluted at 2-8°C for one month or (in aliquots) at -20°C for longer. Avoid repeated freezing and thawing.
Stability:	Shelf life: one year from despatch.
Gene Name:	BCL2 associated agonist of cell death
Database Link:	<a href="#">Entrez Gene 572 Human</a> <a href="#">Q92934</a>



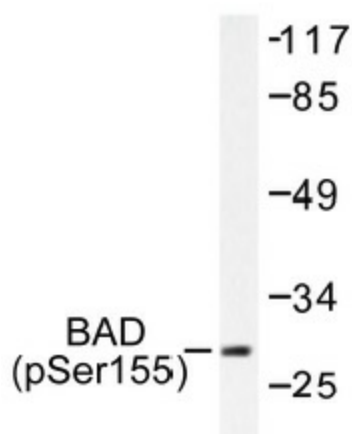
[View online »](#)

**Background:**

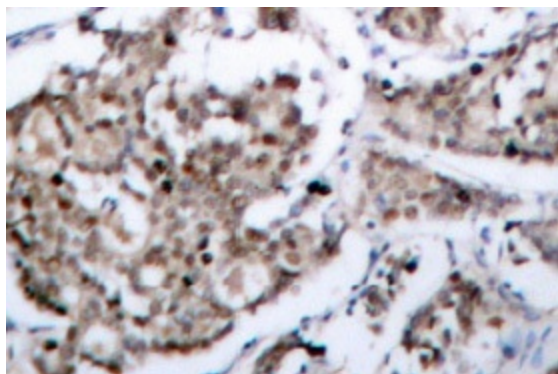
The Bcl-2 family of proteins is characterized by its ability to modulate cell death (apoptosis) under a broad range of physiologic conditions. Bcl-2 and several related proteins function to inhibit apoptosis while other members of the Bcl-2 family, such as Bax and Bak, enhance cell death under various conditions. For instance, Bcl-xL represses cell death, while its shorter form, Bcl-xS, promotes apoptosis. A protein designated Bad exhibits homology to Bcl-2 limited to the BH1 and BH2 domains. Bad functions to dimerize with Bcl-xL and with Bcl-2, but not with Bax, Bcl-xS, Mcl-1, A1 or itself. In mammalian cells, Bad binds with greater affinity to Bcl-xL than to Bcl-2 and reverses the death repressor activity of Bcl-xL but not Bcl-2. Dimerization of Bad with Bcl-xL results in displacement of Bax from Bcl-xL:Bax complexes, thereby causing restoration of Bax-mediated apoptosis.

**Synonyms:**

BAD, BBC6, BCL2L8, Bcl-2-like protein 8, Bcl2-L-8

**Product images:**


Western blot (WB) analysis of p-BAD (pSer155) antibody in extracts from 293 cells treated with Forskolin.



Immunohistochemistry (IHC) analyzes of p-BAD (pSer155) antibody in paraffin-embedded human breast carcinoma tissue.