

Product datasheet for **AP01533PU-M**

ATF 4 (ATF4) pSer245 Rabbit Polyclonal Antibody

Product data:

Product Type:	Primary Antibodies
Applications:	IHC, IP, WB
Recommended Dilution:	Western Blot: 1/500-1/1000. Immunohistochemistry on paraffin sections 1/50-1/200. Immunoprecipitation: 1/50-1/200.
Reactivity:	Human
Host:	Rabbit
Clonality:	Polyclonal
Specificity:	p-ATF4 (pSer245) antibody detects endogenous levels of p-ATF4 protein
Formulation:	Phosphate buffered saline (PBS) with 0.05% sodium azide, approx. pH 7.2. State: Aff - Purified State: Liquid purified Ig fraction
Concentration:	1.0 mg/ml
Purification:	Affinity chromatography
Conjugation:	Unconjugated
Storage:	Store the antibody undiluted at 2-8°C for one month or (in aliquots) at -20°C for longer. Avoid repeated freezing and thawing.
Stability:	Shelf life: one year from despatch.
Gene Name:	activating transcription factor 4
Database Link:	Entrez Gene 468 Human P18848



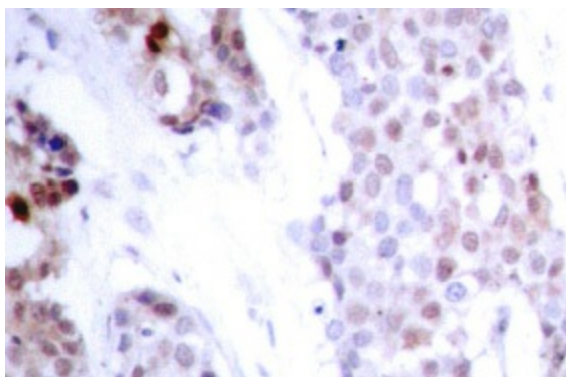
[View online »](#)

Background:

ATF4 is a transcription factor that was originally identified as a widely expressed mammalian DNA binding protein that could bind a tax-responsive enhancer element in the LTR of HTLV1. The encoded protein was also isolated and characterized as the cAMP-response element binding protein 2 (CREB2). The protein encoded by this gene belongs to a family of DNA-binding proteins that includes the AP1 family of transcription factors, cAMP-response element binding proteins (CREBs) and CREB-like proteins. These transcription factors share a leucine zipper region that is involved in protein-protein interactions, located C-terminal to a stretch of basic amino acids that functions as a DNA binding domain (referenced from Entrez gene).

Synonyms:

CREB2, CREB-2, TXREB, Activating transcription factor 4, ATF-4

Product images:


Immunohistochemistry (IHC) analysis of p-ATF4 (pSer245) antibody Cat.-No.: [AP01533PU-N] in paraffin-embedded human breast carcinoma tissue.