

Product datasheet for **AP01528PU-N**

ATF2 pSer112/94 Rabbit Polyclonal Antibody

Product data:

Product Type:	Primary Antibodies
Applications:	ELISA, IHC, IP, WB
Recommended Dilution:	ELISA: 1:10000~1:20000. Western Blot: 1:500~1:1000. Immunohistochemistry: 1:50~1:200. Immunoprecipitation: 1:50~1:200.
Reactivity:	Human, Mouse, Rat
Host:	Rabbit
Clonality:	Polyclonal
Specificity:	p-ATF2 (pSer112/94) antibody detects endogenous levels of p-ATF2 protein.
Formulation:	Phosphate buffered saline (PBS) with 15 mM sodium azide, approx. pH 7.2. State: Aff - Purified State: Liquid purified Ig
Concentration:	1,0 mg/ml
Purification:	Affinity chromatography
Conjugation:	Unconjugated
Storage:	Store the antibody undiluted at 2-8°C for one month or (in aliquots) at -20°C for longer. Avoid repeated freezing and thawing.
Stability:	Shelf life: one year from despatch.
Gene Name:	activating transcription factor 2
Database Link:	Entrez Gene 1386 Human P15336



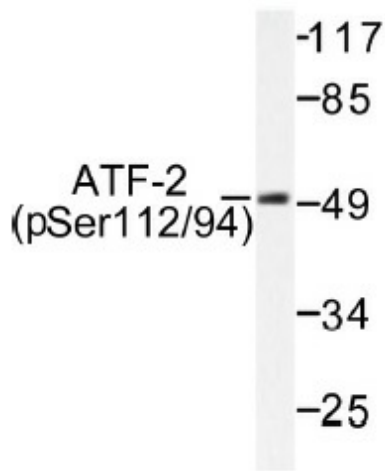
[View online »](#)

Background:

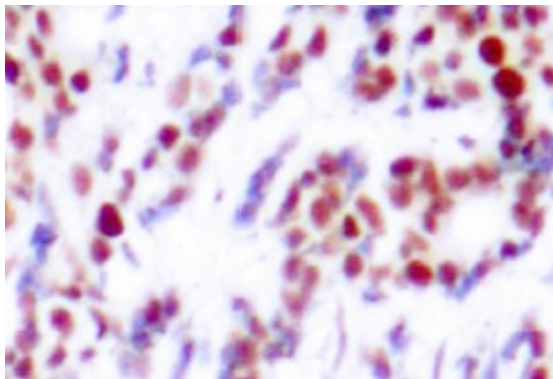
ATF2 (Activating Transcription Factor 2, CREBP, HB16, CREB2, TREB7) is a member of the ATF/CREB family of basic region leucine zipper DNA binding proteins that regulates transcription by binding to a consensus cAMP response element (CRE) in the promoter of various viral and cellular genes. Many of these genes are important in cell growth and differentiation, and in stress and immune responses. ATF2 is a nuclear protein that binds DNA as a dimer and can form dimers with members of the ATF/CREB and Jun/Fos families. It is a stronger activator as a heterodimer with cjun than as a homodimer. Several isoforms of ATF2 arise by differential splicing. The stable native full length ATF2 is transcriptionally inactive as a result of an inhibitory direct intramolecular interaction of its carboxy terminal DNA binding domain with the amino terminal transactivation domain.

Synonyms:

ATF-2, CREB2, CREBP1, Activating transcription factor 2, CRE-BP1, HB16, CREB-2

Product images:


Western blot (WB) analysis of p-ATF2 (pSer112/94) antibody in extracts from MDA-MB-435 cells.



Immunohistochemistry (IHC) analyzes of p-ATF2 (pSer112/94) antibody in paraffin-embedded human breast carcinoma tissue.