

## Product datasheet for **AP01512PU-S**

### EIF4E Rabbit Polyclonal Antibody

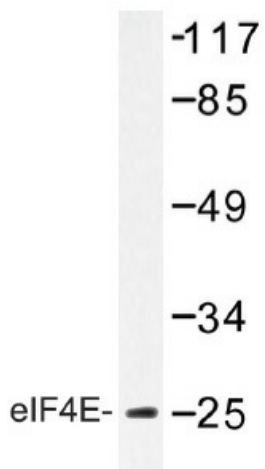
#### Product data:

|                         |  |
|-------------------------|--|
| Product Type:           | Primary Antibodies   |
| Applications:           | IHC, WB  |
| Recommended Dilution:   | <b>Western Blot:</b> 1/500-1/1000.<br><b>Immunohistochemistry on paraffin sections:</b> 1/50-1/200.  |
| Reactivity:             | Human, Mouse, Rat  |
| Host:                   | Rabbit   |
| Clonality:              | Polyclonal   |
| Specificity:            | eIF4E antibody detects endogenous levels of eIF4E protein. (region surrounding Thr203)   |
| Formulation:            | Phosphate buffered saline (PBS) with 0.05% sodium azide, approx. pH 7.2.<br>State: Aff - Purified<br>State: Liquid purified Ig fraction  |
| Concentration:          | 1.0 mg/ml  |
| Purification:           | Affinity chromatography  |
| Conjugation:            | Unconjugated   |
| Storage:                | eIF4E (T203) antibody detects endogenous levels of eIF4E protein.  |
| Predicted Protein Size: | ~ 25 kDa   |
| Gene Name:              | eukaryotic translation initiation factor 4E  |
| Database Link:          | <a href="#">Entrez Gene 1977 Human P06730</a>  |
| Background:             | The initiation of protein synthesis in eukaryotic cells is regulated by interactions between protein initiation factors and RNA molecules. The eukaryotic initiation complex eIF4F exists in vitro as a trimeric complex of eIF4G, eIF4E, and eIF4A. Together, the complex allows ribosome binding to mRNA by inducing the unwinding of mRNA secondary structures. eIF4E is a 25 kDa protein that binds to the mRNA cap during an early step in the initiation of protein synthesis. eIF4A is a 46 kDa protein that acts as an ATP-dependent RNA helicase. eIF4G is 154 kDa protein that acts as a bridge between eIF4E, eIF4A and the eIF3 complex. |
| Synonyms:               | eIF-4F 25 kDa subunit, EIF-4E, EIF4EL1, EIF4F  |

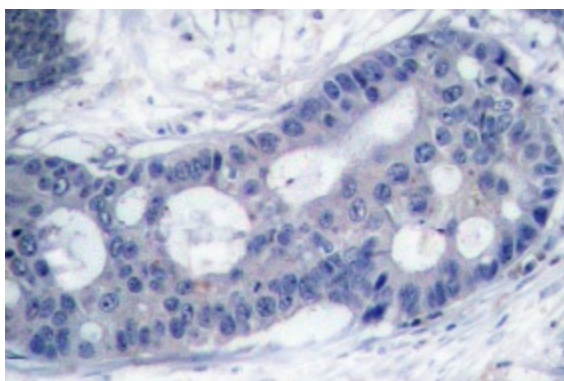


[View online »](#)

## Product images:



Western blot (WB) analyzes of eIF4E antibody (Cat.-No.: [AP01512PU-N]) in extracts from COLO205 cells.



Immunohistochemistry (IHC) analyzes of eIF4E antibody (Cat.-No.: [AP01512PU-N]) in paraffin-embedded human breast carcinoma tissue.