

## Product datasheet for **AP01512PU-M**

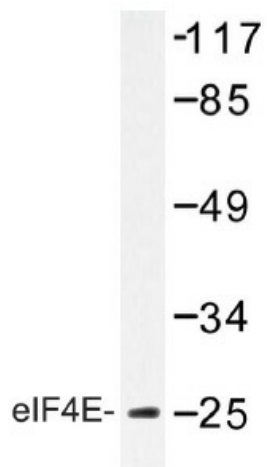
### EIF4E Rabbit Polyclonal Antibody

#### Product data:

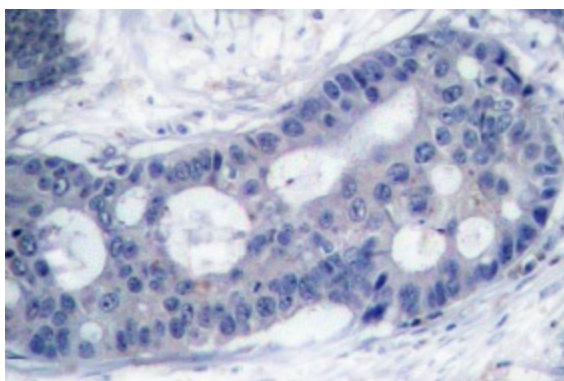
Product Type:	Primary Antibodies
Applications:	IHC, WB
Recommended Dilution:	<b>Western Blot:</b> 1/500-1/1000. <b>Immunohistochemistry on paraffin sections:</b> 1/50-1/200.
Reactivity:	Human, Mouse, Rat
Host:	Rabbit
Clonality:	Polyclonal
Specificity:	eIF4E antibody detects endogenous levels of eIF4E protein. (region surrounding Thr203)
Formulation:	Phosphate buffered saline (PBS) with 0.05% sodium azide, approx. pH 7.2. State: Aff - Purified State: Liquid purified Ig fraction
Concentration:	1.0 mg/ml
Purification:	Affinity chromatography
Conjugation:	Unconjugated
Storage:	eIF4E (T203) antibody detects endogenous levels of eIF4E protein.
Predicted Protein Size:	~ 25 kDa
Gene Name:	eukaryotic translation initiation factor 4E
Database Link:	<a href="#">Entrez Gene 1977 Human P06730</a>
Background:	The initiation of protein synthesis in eukaryotic cells is regulated by interactions between protein initiation factors and RNA molecules. The eukaryotic initiation complex eIF4F exists in vitro as a trimeric complex of eIF4G, eIF4E, and eIF4A. Together, the complex allows ribosome binding to mRNA by inducing the unwinding of mRNA secondary structures. eIF4E is a 25 kDa protein that binds to the mRNA cap during an early step in the initiation of protein synthesis. eIF4A is a 46 kDa protein that acts as an ATP-dependent RNA helicase. eIF4G is 154 kDa protein that acts as a bridge between eIF4E, eIF4A and the eIF3 complex.
Synonyms:	eIF-4F 25 kDa subunit, EIF-4E, EIF4EL1, EIF4F



[View online »](#)

**Product images:**


Western blot (WB) analyzes of eIF4E antibody (Cat.-No.: [AP01512PU-N]) in extracts from COLO205 cells.



Immunohistochemistry (IHC) analyzes of eIF4E antibody (Cat.-No.: [AP01512PU-N]) in paraffin-embedded human breast carcinoma tissue.