

## Product datasheet for **AP01509PU-N**

### alpha Synuclein (SNCA) Rabbit Polyclonal Antibody

#### Product data:

Product Type:	Primary Antibodies
Applications:	IHC, WB
Recommended Dilution:	<b>Western Blot:</b> 1/500-1/1000. <b>Immunohistochemistry on paraffin sections:</b> 1/50-1/200.
Reactivity:	Human, Mouse, Rat
Host:	Rabbit
Clonality:	Polyclonal
Specificity:	Synuclein- $\alpha$ antibody detects endogenous levels of Synuclein- $\alpha$ protein. (region surrounding Asp119)
Formulation:	Phosphate buffered saline (PBS) with 0.05% sodium azide, approx. pH 7.2. State: Aff - Purified State: Liquid purified Ig fraction
Concentration:	1.0 mg/ml
Purification:	Affinity chromatography
Conjugation:	Unconjugated
Storage:	Store the antibody undiluted at 2-8°C for one month or (in aliquots) at -20°C for longer. Avoid repeated freezing and thawing.
Stability:	Shelf life: one year from despatch.
Predicted Protein Size:	~ 20 kDa
Gene Name:	synuclein alpha
Database Link:	<a href="#">Entrez Gene 6622 Human P37840</a>



[View online »](#)

**Background:**

The synuclein family members, including  $\alpha$ -synuclein (also designated NACP for non- $\beta$  Amyloid component) and  $\beta$ -synuclein, are predominantly expressed in the brain and are speculated to be involved in synaptic regulation and neuronal plasticity.  $\alpha$ -synuclein is localized to neuronal cell bodies and synapses.  $\alpha$ -synuclein was first identified as a component of Alzheimer's disease amyloid plaques. Abnormal platelet function in Alzheimer's disease has been demonstrated. During megakaryocytic differentiation  $\alpha$ -synuclein has been found to be upregulated, while  $\beta$ -synuclein is downregulated, indicating that coordinate expression of synucleins may be important during hematopoietic cell differentiation. A mutant form of  $\alpha$ -synuclein has been found in patients with early onset Parkinson's disease.

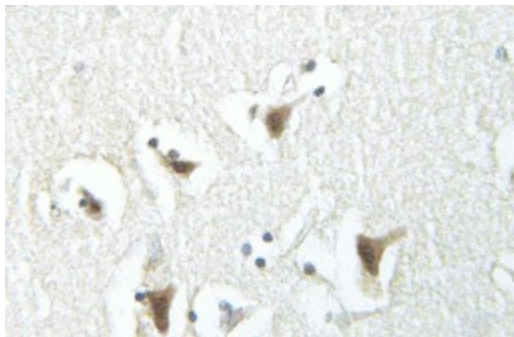
**Synonyms:**

NACP, PARK1

**Product images:**



Western blot (WB) analysis of Synuclein- $\alpha$  antibody (Cat.-No.: AP01509PU-N) in extracts from rat brain.



Immunohistochemistry (IHC) analyzes of Synuclein- $\alpha$  antibody (Cat.-No.: AP01509PU-N) in paraffin-embedded human brain tissue.