

Product datasheet for **AP01508PU-N**

Smoothened (SMO) Rabbit Polyclonal Antibody

Product data:

Product Type:	Primary Antibodies
Applications:	WB
Recommended Dilution:	Western Blot: 1/500-1/1000.
Reactivity:	Human, Mouse, Rat
Host:	Rabbit
Clonality:	Polyclonal
Specificity:	Smo antibody detects endogenous levels of Smo protein. (region surrounding Val107)
Formulation:	Phosphate buffered saline (PBS) with 0.05% sodium azide, approx. pH 7.2. State: Aff - Purified State: Liquid purified Ig fraction
Concentration:	1.0 mg/ml
Purification:	Affinity chromatography
Conjugation:	Unconjugated
Storage:	Store the antibody undiluted at 2-8°C for one month or (in aliquots) at -20°C for longer. Avoid repeated freezing and thawing.
Stability:	Shelf life: one year from despatch.
Predicted Protein Size:	~ 86 kDa
Gene Name:	smoothened, frizzled class receptor
Database Link:	Entrez Gene 6608 Human Q99835



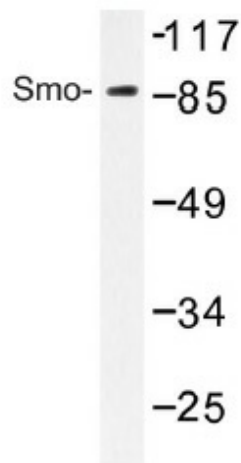
[View online »](#)

Background:

Overexpression of either Wnt-1 or the GLI proteins results in cancer; however, the molecular basis for this transformation was poorly understood. The Wnt-1 and GLI proteins have now been placed in a signaling cascade downstream of the mammalian homologs of the *Drosophila* hedgehog and patched proteins. The *Drosophila* segment polarity gene hedgehog (hh) encodes a 19-25 kDa secreted protein that appears to function in embryonic and imaginal disc patterning. The ptc gene, also identified as a *Drosophila* segment polarity gene, encodes the transmembrane protein patched, the expression of which is precisely regulated during embryonic development. Hedgehog has been shown to enhance the expression of the Wnt family of proteins through a signaling cascade involving the GLI transcription factors, while patched functions as a repressor opposing hedgehog's effects. Smoothened (Smo), a seven transmembrane receptor, is complexed with patched in many tissues and is believed to be an essential component in the Hh signaling pathway.

Synonyms:

SMOH, Smoothened homolog

Product images:


Western blot (WB) analysis of Smo antibody (Cat.-No.: AP01508PU-N) in extracts from HUVEC cells.