

## Product datasheet for **AP01491PU-M**

### **NUP160 Rabbit Polyclonal Antibody**

#### **Product data:**

Product Type:	Primary Antibodies
Applications:	WB
Recommended Dilution:	<b>Western Blot:</b> 1/500-1/1000.
Reactivity:	Human, Mouse
Host:	Rabbit
Clonality:	Polyclonal
Specificity:	Nup160 antibody detects endogenous levels of Nup160 protein. (region surrounding Leu424)
Formulation:	Phosphate buffered saline (PBS) with 0.05% sodium azide, approx. pH 7.2. State: Aff - Purified State: Liquid purified Ig fraction
Concentration:	1.0 mg/ml
Purification:	Affinity chromatography
Conjugation:	Unconjugated
Storage:	Store the antibody undiluted at 2-8°C for one month or (in aliquots) at -20°C for longer. Avoid repeated freezing and thawing.
Stability:	Shelf life: one year from despatch.
Predicted Protein Size:	~ 150 kDa
Gene Name:	nucleoporin 160kDa
Database Link:	<a href="#">Entrez Gene 23279 Human Q12769</a>

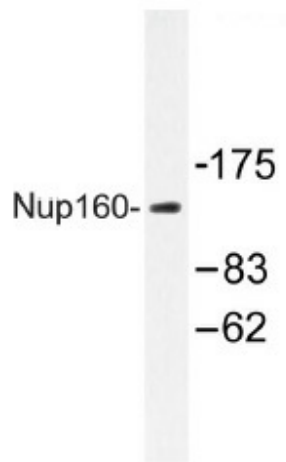
[View online »](#)

**Background:**

Nuclear pore complexes (NPCs) are the channels for the bi-directional movement of macromolecules between the nucleus and cytoplasm, and contain more than 100 different subunits. Many of them belong to a family called nucleoporins, which are characterized by the presence of O-linked N-acetylglucosamine moieties and a distinctive pentapeptide repeat (XFXFG). Nuclear pore complex protein Nup96 (Nup96) is formed by cleavage of a 186 kDa precursor protein. This proteolytic cleavage yields two nucleoporins, Nup98 and Nup96. Nup96 is part of the Nup160 subcomplex in the nuclear pore (which consists of Nup160, Nup133, Nup107 and Nup96). Nup96 plays a major role in the two-way transport across the nuclear pore and is important in RNA export.

**Synonyms:**

KIAA0197, NUP120, Nucleoporin Nup160

**Product images:**


Western blot (WB) analysis of Nup160 antibody (Cat.-No.: [AP01491PU-N]) in extracts from HepG2 cells.