

Product datasheet for **AP01486PU-S**

CYB5R3 Rabbit Polyclonal Antibody

Product data:

Product Type:	Primary Antibodies
Applications:	IHC, WB
Recommended Dilution:	Western Blot: 1/500-1/1000. Immunohistochemistry on paraffin sections 1/50-1/200.
Reactivity:	Human
Host:	Rabbit
Clonality:	Polyclonal
Immunogen:	Synthetic peptide, corresponding to amino acids 141-190 of Human CYB5R3.
Specificity:	CYB5R3 antibody detects endogenous levels of CYB5R3 protein. (region surrounding Ile169)
Formulation:	Phosphate buffered saline (PBS) with 0.05% sodium azide, approx. pH 7.2. State: Aff - Purified State: Liquid purified Ig fraction.
Concentration:	1.0 mg/ml
Purification:	Affinity Chromatography.
Conjugation:	Unconjugated
Storage:	Store undiluted at 2-8°C for one month or (in aliquots) at -20°C for longer. Avoid repeated freezing and thawing.
Stability:	Shelf life: one year from despatch.
Predicted Protein Size:	~ 34 kDa
Gene Name:	cytochrome b5 reductase 3
Database Link:	Entrez Gene 1727 Human P00387



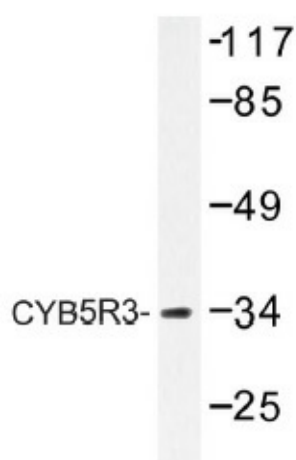
[View online »](#)

Background:

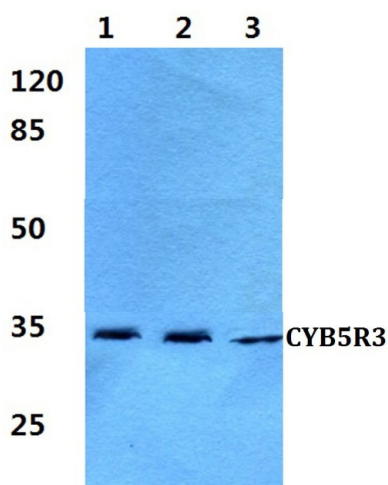
CYB5R3 (NADH-cytochrome b5, reductase 3, diaphorase 1) is a 301 amino acid protein encoded by the human gene CYB5R3. CYB5R3 belongs to the flavoprotein pyridine nucleotide cytochrome reductase family and has two naturally occurring isoforms. Isoform 1 is anchored to the cytoplasmic side of the endoplasmic reticulum membrane and mitochondrion outer membrane, while isoform 2 is the soluble form found in erythrocytes. CYB5R3 is involved in the desaturation and elongation of fatty acids, cholesterol biosynthesis, drug metabolism and, in erythrocytes, methemoglobin reduction. A serine residue at position 117 seems to only be found in persons of African origin. The allele frequency is 0.23 in African Americans. It is not found in Caucasians, Asians, Indo-Aryans or Arabs. This difference seems to have no effect on the enzyme activity.

Synonyms:

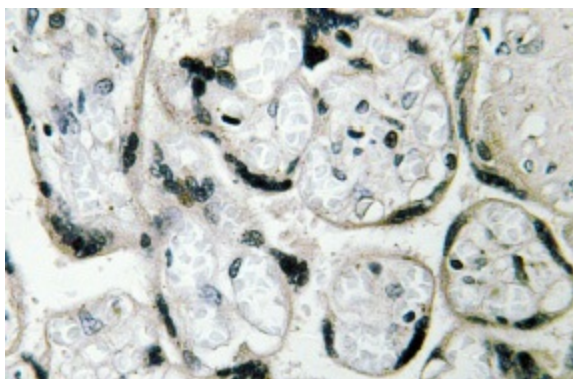
NADH-cytochrome b5 reductase 3, B5R, DIA1, Diaphorase-1

Product images:


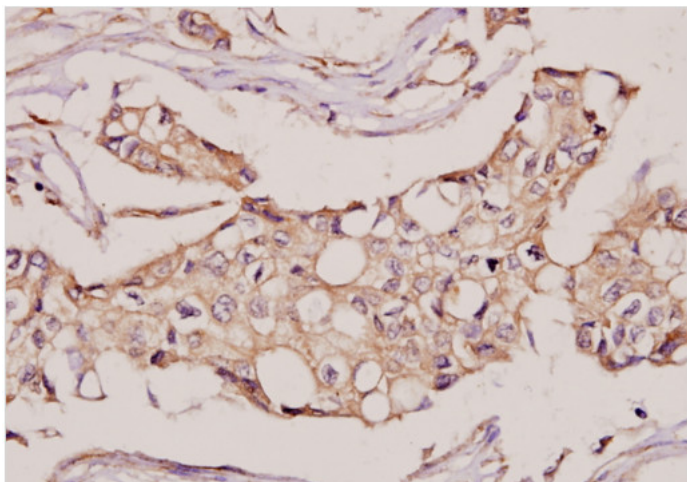
Western blot (WB) analysis of CYB5R3 (I169) Antibody at 1/500 dilution. Lane 1: HeLa cell lysate. Lane 2: HEK293T cell lysate. Lane 3: Raw264.7 cell lysate.



Western blot (WB) analysis of CYB5R3 antibody in extracts from HepG2 cells.



Immunohistochemistry (IHC) analyzes of CYB5R3 antibody in paraffin-embedded human breast tissue.



Immunohistochemistry (IHC) analyzes of CYB5R3 antibody in paraffin-embedded human placenta tissue.