

## Product datasheet for **AP01485PU-M**

### MYOM2 Rabbit Polyclonal Antibody

#### Product data:

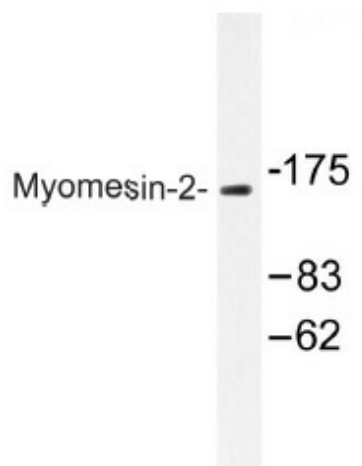
Product Type:	Primary Antibodies
Applications:	WB
Recommended Dilution:	<b>Western Blot:</b> 1/500-1/1000.
Reactivity:	Human, Mouse, Rat
Host:	Rabbit
Clonality:	Polyclonal
Immunogen:	Synthetic peptide corresponding to amino acids 620-670 of Human Myomesin-2.
Specificity:	This antibody detects endogenous levels of Myomesin-2 protein. (region surrounding Tyr644)
Formulation:	Phosphate buffered saline (PBS), pH~7.2 State: Aff - Purified State: Liquid purified Ig fraction (> 95% pure by SDS-PAGE) Preservative: 0.05% Sodium Azide
Concentration:	1.0 mg/ml
Purification:	Affinity Chromatography using epitope-specific immunogen
Conjugation:	Unconjugated
Storage:	Store undiluted at 2-8°C for one month or (in aliquots) at -20°C for longer. Avoid repeated freezing and thawing.
Stability:	Shelf life: one year from despatch.
Predicted Protein Size:	~ 165 kDa
Gene Name:	myomesin 2
Database Link:	<a href="#">Entrez Gene 9172 Human P54296</a>
Background:	Myomesin-1 (190 kDa) and myomesin-2 (165 kDa) are components of the vertebrate myofibrillar M band and are associated with Titin, Myosin and Connectin. The myomesin proteins are responsible for the formation of a head structure on one end of the Titin string that connects the Z and M bands of the sarcomere. Myomesin-1 and -2 have unique N-terminal domains and are expressed mainly in skeletal muscle. The gene encoding human myomesin-1 maps to chromosome 18p11.31-p11.32.



[View online »](#)

Synonyms: MYOM2

**Product images:**



Western blot (WB) analysis of Myomesin-2 antibody in extracts from COS-7 cells.