

Product datasheet for **AP01484PU-M**

MNDA Rabbit Polyclonal Antibody

Product data:

Product Type:	Primary Antibodies
Applications:	IHC, WB
Recommended Dilution:	Western Blot: 1/500-1/1000. Immunohistochemistry on paraffin sections: 1/50-1/200.
Reactivity:	Human
Host:	Rabbit
Clonality:	Polyclonal
Specificity:	MNDA antibody detects endogenous levels of MNDA protein. (region surrounding Val406)
Formulation:	Phosphate buffered saline (PBS) with 0.05% sodium azide, approx. pH 7.2. State: Aff - Purified State: Liquid purified Ig fraction
Concentration:	1.0 mg/ml
Purification:	Affinity chromatography
Conjugation:	Unconjugated
Storage:	Store the antibody undiluted at 2-8°C for one month or (in aliquots) at -20°C for longer. Avoid repeated freezing and thawing.
Stability:	Shelf life: one year from despatch.
Predicted Protein Size:	~ 46 kDa
Gene Name:	myeloid cell nuclear differentiation antigen
Database Link:	Entrez Gene 4332 Human P41218



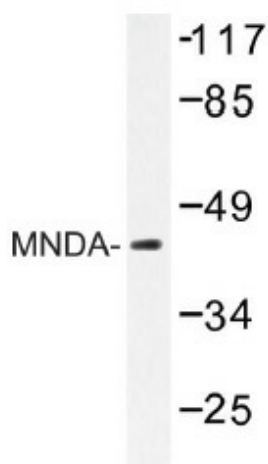
[View online »](#)

Background:

Interferon-inducible proteins include IFI-202, IFI-203, IFI-204 and D3, which are encoded by six or more structurally related and IFN-inducible mouse genes mapping at the q21-q23 region of chromosome 1. The proteins encoded by these genes have homologous 200 amino acid segments. IFI-202 is a 52 kDa, primarily nuclear phosphoprotein which inhibits cell growth, in part by modulating transcriptional activity of NFκB, E2F, AP-1 and p53. Two related human proteins, MNDA (myeloid cell nuclear differentiation antigen) and IFI-16, have also been described. Expression of MNDA has been observed specifically in cells of the granulocyte-macrophage lineage. IFI-16 is constitutively expressed in various T and B cell lines and can be induced by IFN-γ in HL60 cells. At least four of the Gene 200 cluster of IFN-inducible proteins, IFI-202, IFI-204, MNDA and IFI-16, are localized in the nucleus.

Synonyms:

Myeloid cell nuclear differentiation antigen

Product images:


Western blot (WB) analysis of MNDA antibody (Cat.-No.: [AP01484PU-N]) in extracts from LOVO cells.