

## Product datasheet for **AP01479PU-N**

### **GNL1 Rabbit Polyclonal Antibody**

#### **Product data:**

Product Type:	Primary Antibodies
Applications:	WB
Recommended Dilution:	<b>Western Blot:</b> 1/500-1/1000.
Reactivity:	Human, Mouse, Rat
Host:	Rabbit
Clonality:	Polyclonal
Specificity:	GNL1 antibody detects endogenous levels of GNL1 protein. (region surrounding Gln103)
Formulation:	Phosphate buffered saline (PBS) with 0.05% sodium azide, approx. pH 7.2. State: Aff - Purified State: Liquid purified Ig fraction
Concentration:	1.0 mg/ml
Purification:	Affinity chromatography
Conjugation:	Unconjugated
Storage:	Store the antibody undiluted at 2-8°C for one month or (in aliquots) at -20°C for longer. Avoid repeated freezing and thawing.
Stability:	Shelf life: one year from despatch.
Predicted Protein Size:	~ 69 kDa
Gene Name:	G protein nucleolar 1 (putative)
Database Link:	<a href="#">Entrez Gene 2794 Human P36915</a>



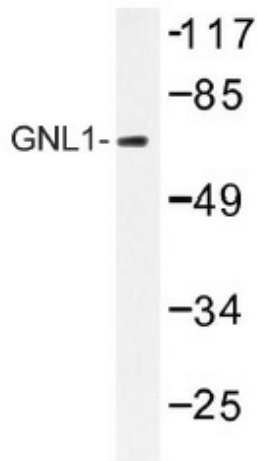
[View online »](#)

**Background:**

GNL1 (guanine nucleotide-binding protein-like 1) is a nuclear protein that likely acts as a regulator of the histocompatibility cluster. GNL1 and MMR1, the murine homolog, are localized within or close to the MHC class I region and belong to the MMR1/HSR1 GTP-binding protein family. GTPases, such as GNL1, from the MMR1/HSR1 GTP-binding protein subfamily are circularly rearranged G-motifs that play a critical role in maintaining normal cell growth. Deletion of these genes results in severe growth defects with a marked reduction in mature rRNA species and a concomitant accumulation of the 35S pre-rRNA transcript. Deletion also causes the ribosomal protein RPL25A to fail exportation from the nucleolus. Deletion of any of the G-domain motifs will result in a null phenotype and nuclear/nucleolar localization that lacks the nucleolar export of preribosomes and is accompanied by a distortion of the nucleolar structure. Upon DNA damage GNL1 is phosphorylated by a kinase, possibly Atm or ATR.

**Synonyms:**

Guanine nucleotide-binding protein-like 1, GTP-binding protein HSR1

**Product images:**

Western blot (WB) analysis of GNL1 antibody (Cat.-No.: AP01479PU-N) in extracts from K562 cells.