

Product datasheet for **AP01477PU-M**

GNAL Rabbit Polyclonal Antibody

Product data:

Product Type:	Primary Antibodies
Applications:	IHC, WB
Recommended Dilution:	Western Blot: 1/500-1/1000. Immunohistochemistry on Paraffin Sections: 1/50-1/200.
Reactivity:	Human, Mouse, Rat
Host:	Rabbit
Clonality:	Polyclonal
Immunogen:	Synthetic peptide, corresponding to amino acids 50-100 of Human Gα olf.
Specificity:	This antibody detects endogenous levels of G alpha olf protein.
Formulation:	Phosphate Buffered Saline (PBS), pH~7.2 State: Aff - Purified State: Liquid purified Ig fraction (95% by SDS-PAGE) Preservative: 0.05% Sodium Azide
Concentration:	1.0 mg/ml
Purification:	Affinity Chromatography using epitope-specific immunogen
Conjugation:	Unconjugated
Storage:	Store the antibody undiluted at 2-8°C for one month or (in aliquots) at -20°C for longer. Avoid repeated freezing and thawing.
Stability:	Shelf life: one year from despatch.
Predicted Protein Size:	~40 kDa
Gene Name:	G protein subunit alpha L
Database Link:	<u>Entrez Gene 14680 Mouse</u> <u>Entrez Gene 24611 Rat</u> <u>Entrez Gene 2774 Human</u> <u>P38405</u>



[View online »](#)

Background:

Heterotrimeric G proteins function to relay information from cell surface receptors to intracellular effectors. Each of a very broad range of receptors specifically detects an extracellular stimulus (a photon, pheromone, odorant, hormone or neurotransmitter) while the effectors (e.g. adenylyl cyclase), which act to generate one or more intracellular messengers, are less numerous. In mammals, G protein α , β and γ polypeptides are encoded by at least 16, 4 and 7 genes, respectively. Most interest in G proteins has been focused on their α subunits, since these proteins bind and hydrolyze GTP, and most obviously regulate the activity of the best studied effectors. The Gs subfamily of $G\alpha$ subunits includes two closely related proteins, $G\alpha_s$ and $G\alpha_{olf}$, which, respectively, stimulate adenylyl cyclase and mediate response to olfactory stimuli.

Synonyms:

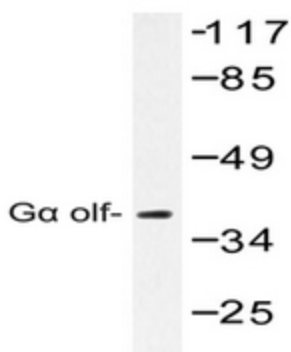
GNAL

Protein Families:

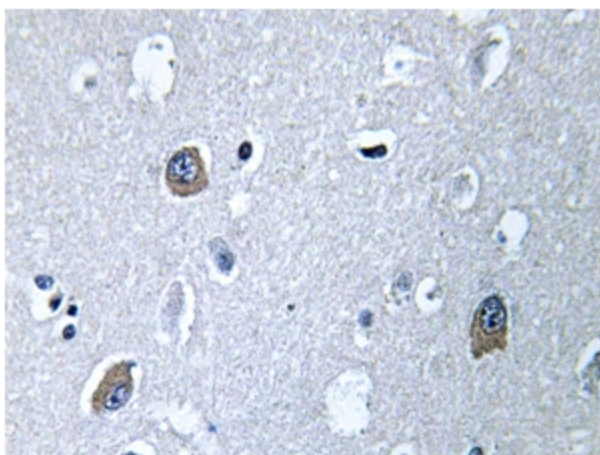
Druggable Genome

Protein Pathways:

Calcium signaling pathway, Olfactory transduction

Product images:


Western blot analysis of G alpha olf antibody (Cat.-No [AP01477PU-N]) in extracts from LOVO cells.



Immunohistochemistry analyzes of G alpha olf antibody (Cat.-No [AP01477PU-N]) in paraffin-embedded human brain tissue.