

## Product datasheet for **AP01474PU-M**

### **TUBGCP5 Rabbit Polyclonal Antibody**

#### **Product data:**

Product Type:	Primary Antibodies
Applications:	IHC, WB
Recommended Dilution:	<b>Western Blot:</b> 1/500-1/1000. <b>Immunohistochemistry on paraffin sections:</b> 1/50-1/200.
Reactivity:	Human, Mouse
Host:	Rabbit
Clonality:	Polyclonal
Specificity:	GCP5 antibody detects endogenous levels of GCP5 protein. (region surrounding Ile779)
Formulation:	Phosphate buffered saline (PBS) with 0.05% sodium azide, approx. pH 7.2. State: Aff - Purified State: Liquid purified Ig fraction
Concentration:	1.0 mg/ml
Purification:	Affinity chromatography
Conjugation:	Unconjugated
Storage:	Store the antibody undiluted at 2-8°C for one month or (in aliquots) at -20°C for longer. Avoid repeated freezing and thawing.
Stability:	Shelf life: one year from despatch.
Predicted Protein Size:	~ 118 kDa
Gene Name:	tubulin gamma complex associated protein 5
Database Link:	<a href="#">Entrez Gene 233276 Mouse</a> <a href="#">Entrez Gene 114791 Human</a> <a href="#">Q96RT8</a>



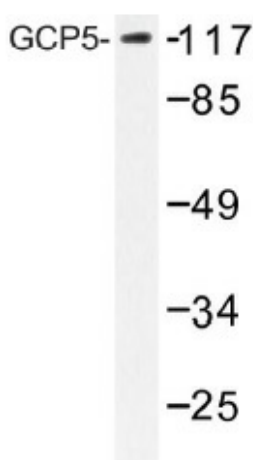
[View online »](#)

**Background:**

The  $\gamma$ -Tubulin complex is composed of  $\gamma$  Tubulin and the  $\gamma$ -Tubulin complex associated proteins GCP2, GCP3, GCP4, GCP5 and GCP6, all of which are essential components of microtubule organizing centers.  $\gamma$ -Tubulin complex components are localized to both the centrosome, where they are involved in microtubule nucleation, and to the cytoplasm, where they exist as soluble complexes that can be recruited to the centrosome as needed. Although the GCP proteins are related, they have distinct roles which contribute to the proper function of the  $\gamma$ -Tubulin complex. GCP5 ( $\gamma$ -Tubulin complex component 5), also known as TUBGCP5, is a 1,024 amino acid member of the  $\gamma$ -Tubulin complex and is highly expressed in heart and skeletal muscle. Defects in the gene encoding GCP5 are implicated in Prader-Willi syndrome (PWS), a rare genetic disorder associated with obesity, compulsive behavior and lower intellectual ability.

**Synonyms:**

GCP-5, GCP5, KIAA1899

**Product images:**


Western blot (WB) analysis of GCP5 antibody (Cat.-No.: [AP01474PU-N]) in extracts from HT-29 cells.